

JANUARY 2016
MAGAZINE FOR MEMBERS

WETA



DOWNTON ABBEY

Season 6 begins January 3 on MASTERPIECE

More on WETA TV 26/HD this month!

- Comic drama *Doc Martin* returns with a new season
- BBC crime series *Luther* & a *Sherlock* special premiere
- *Finding Your Roots* with Henry Louis Gates, Jr. returns
- Concerts honor Willie Nelson & American creativity



WETA Focus



In January, WETA presents an extraordinary array of exciting television programming, featuring lively concerts, intriguing historical journeys, superb dramas and much more. We are very proud to again partner with two of Washington’s preeminent institutions to bring to a national audience dazzling cultural events from the nation’s capital. The entertaining WETA co-productions *A Celebration of American Creativity: In Performance at the White House* and *Willie Nelson: The Library of Congress Gershwin Prize for Popular Song* present concerts featuring some of America’s foremost musical artists.

Likewise, we are delighted to be collaborating with distinguished filmmaker Prof. Henry Louis “Skip” Gates, Jr., to bring Season 3 of his fascinating series *Finding Your Roots* — now produced with WETA — to public television audiences coast-to-coast. WETA is working with Skip on several additional projects that will premiere in the coming year.

This month, of course, also heralds the much-anticipated final season of the riveting *Masterpiece* drama *Downton Abbey*, which has captivated viewers in Greater Washington for the past five years. While we will be sad to say goodbye when the engaging episodes of Season 6 end, reminders abound this month that there are many other fine dramas still to behold. January brings a new season of the immensely popular series *Doc Martin*; the acclaimed BBC detective series *Luther*; a new *Sherlock* special; and a new PBS original series, the Civil War medical drama *Mercy Street*, set in Alexandria, Virginia.

Enjoy all that WETA has to offer during this blockbuster January, and thank you for your support.

Sharon Percy Rockefeller

Sharon Percy Rockefeller, President & CEO, WETA

New Year’s Day *Sherlock* Special on *Masterpiece* airs Friday, January 1 at 9 p.m. on WETA TV 26/HD, after a *Sherlock* marathon the same day

On New Year’s Day, after a *Sherlock*, Season 2 & 3 marathon presentation (7:30 a.m.-6 p.m.), a special new 90-minute *Masterpiece Mystery!*: *Sherlock* production airs at 9 p.m., with Benedict Cumberbatch (*The Imitation Game*) and Martin Freeman (*The Hobbit*) returning to their roles as Arthur Conan Doyle’s sleuthing duo Holmes and Watson. This installment, *The Abominable Bride*, in a departure from the contemporary setting of previous series, features the pair pursuing a case in Victorian London of the 1890s. “It’s not suddenly going to be a different show. It’s essentially our *Sherlock* as if we’d always done it set in 1895. It has the same sensibility,” notes Mark Gatiss, co-creator of *Sherlock* with co-writer Steven Moffat. Popular characters Mary Morstan (played by Amanda Abbington), Inspector Lestrade (Rupert Graves) and Mrs. Hudson (Una Stubbs) join the dynamic duo in their time travel, turning up at 221B Baker Street in the film. For those awaiting the next installment of the BAFTA-, Emmy- and Peabody-winning drama, *Sherlock*, Season 4 goes into production in the spring.

Funding for *Masterpiece* is provided by Viking River Cruises and Audible with additional support from public television viewers and contributors to The Masterpiece Trust.



WETA BROADCASTS AND SERVICES

WETA Television

WETA TV 26

26.4 Over the Air Via Antenna
Cox 26, 802 Comcast 26
Fios 26, 471 RCN 26

WETA HD

26.1 Over the Air Via Antenna
Cox 1026, 1003 Comcast 800
Fios 526 (in the D.C. area)
DirecTV 26, 26-1 Comcast 219
RCN 613 (Baltimore area)
Dish 8076

WETA UK

26.2 Over the Air Via Antenna
Cox 800 Comcast 265
Fios 474 RCN 39

January Highlights on WETA TV 26/HD



AMERICAN PUBLIC TELEVISION

Doc Martin, Series 7 airs Sundays at 8 p.m. on WETA TV 26/HD, beginning January 10; and repeats throughout each week

The wait is over — everyone's favorite grumpy doctor is back! In the highly anticipated new season of the popular comic-drama *Doc Martin*, BAFTA winner Martin Clunes reprises his role as Dr. Martin Ellingham, the general practitioner with a brusque bedside manner and a phobia of blood. Set once again in the picturesque fictional Cornish village of Portwenn, the drama opens anew with Martin heartbroken after the departure of his wife Louisa, portrayed by Caroline Catz, at the end of the previous series. The new programs find

Martin ready to make some changes to win his family back. For the sake of his marriage, and to fulfill his promise to Louisa that he would seek help to try to change, Doc enlists a therapist, Dr. Rachel Timoney — in whom he may finally have met his match. Will Doc and Louisa succeed? And might there be a further series to come? Stay tuned...

Returning in Series 7 are Dame Eileen Atkins (Aunt Ruth), Selina Cadell (Mrs. Tishell), Ian McNeice (Bert Large), Joe Absolom (Al Large), John Marquez (PC Penhale) and Jessica Ransom (Morwenna). Guest stars include Sigourney Weaver. Alongside the programs, WETA features short vignettes featuring cast members, production staff and more. Two other productions this month star Clunes: the 2007 film *The Man Who Lost His Head*, airing January 2, and the 2001 film *Doc Martin: The Movie*, airing January 16. *Doc Martin, Series 7* also airs on WETA UK.

Luther, Series I

airs Saturdays at 8 p.m. on WETA TV 26/HD,
beginning January 2; and repeats Sunday nights

A smart, gripping psychological BBC thriller stars Idris Elba (*The Wire*, *American Gangster*) as Detective Chief Inspector John Luther, an intellectually brilliant but emotionally impulsive London cop tormented by the wicked side of humanity. In his work for the Serious Crimes Unit, Luther shines a light into the hearts and minds of psychopaths and killers, and in doing so opens up the shadowy spaces of his own soul. Throughout the six-part Series I, Luther faces a succession of psychological duels between hunter and hunted, predator and prey. The intensity of his convictions combine with the strength of his passions, provoking the question of whether the detective is a force for good or a man bent on self-destruction. His confidante is his arch-enemy Alice Morgan — portrayed by Ruth Wilson, of *Jane Eyre* — a beautiful multiple-murderess with whom he becomes locked in a lethal battle of wits. As the stakes get ever higher and more personal, Luther's path pulls him towards the edge of temptation. Will his own demons prove to be as dangerous as any of the criminals he pursues?

The popularity of the first series, created in 2010, spawned successive seasons that garnered Emmy nominations and earned Elba a Golden Globe Award. *Luther* was created and written by Neil Cross, who wrote for the series *The Fixer* and *MI-5* (*Spooks* in the U.K.), and is directed by Sam Miller (*MI-5*). *Luther* also airs on WETA UK.



©BBC 2010

For program or membership inquiries, call 703-998-2724 or visit weta.org.

WETA Kids

26.3 Over the Air Via Antenna
Cox 801 Comcast 266
Fios 472 RCN 38

WETA Online

weta.org
weta.org/learningmedia

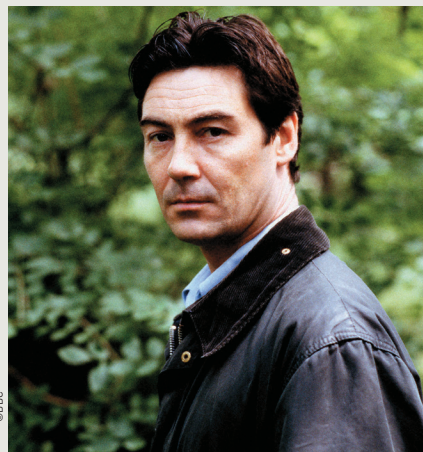
Classical WETA

WETA 90.9 FM Washington
WGMS 89.1 FM Hagerstown
WETA 88.9 FM Frederick
classicalweta.org
vivalavoce.org

January Highlights on WETA TV 26/HD

The Inspector Lynley Mysteries, Series 1 & 2 airs Thursdays at 8 p.m. on WETA TV 26/HD, beginning January 7

WETA reprises the popular 2002 BBC series *The Inspector Lynley Mysteries*, starring Nathaniel Parker as the suave blue-blooded detective and Sharon Small as his disheveled, prickly, plebeian colleague in the acclaimed adaptations of bestselling crime author Elizabeth George's "Inspector Lynley" novels. The programs also air on WETA UK. Superintendent Thomas Lynley, 8th Earl of Asherton, and Detective Sergeant Havers, foisted upon each other, must overcome their personality and class differences to solve mysteries such as the death of a playwright at a Scottish retreat, the killing of a beautiful Cambridge student, and the murder of popular cricket hero. As they try to unmask the killers, the relationship between Lynley and Havers evolves into a mutual respect. Solving their professional problems is less difficult, it seems, than sorting out their personal lives: Lynley has been scorned by the love of his life, and Havers' father is on his deathbed and she struggles to aid her mother, who suffers from Alzheimer's disease.



WWI Tunnels, the Nepal Quake and More on NOVA Wednesdays at 9 p.m. on WETA TV 26/HD



Wednesday-night NOVA programs in January spotlight an array of diverse topics in scientific inquiry. *Secret Tunnel Warfare* (January 6) visits excavations of World War I trenches of the Western Front to spotlight Allied attempts to break the stalemate of trench warfare with massive engineering operations that dug tunnels under enemy lines and delivered explosive surprise attacks. *Life's Rocky Start* (January 13) spotlights the process through which life emerged on Earth four-and-a-half billion years ago; and NOVA joins a mineralogist on the rocky trail to explore this enduring mystery. *Mystery Beneath the Ice* (January 20) spotlights the serious population decline of tiny transparent, shrimp-like creatures that are crucial to the Antarctic food chain and perhaps to the future of all of the world's oceans. In *Himalayan Megaquake* (January 27), dramatic eyewitness footage reveals the shocking quake that rocked Nepal in April 2015. Scientists examine why the earthquake was so devastating and whether another earthquake looms on the horizon.

National corporate funding for NOVA is provided by Google and Cancer Treatment Centers of America. Major funding for NOVA is provided by the David H. Koch Fund for Science, the Corporation for Public Broadcasting, and PBS viewers.


Britain's Royals, in the Lens on WETA TV 26/HD

Royalty Close Up: The Photography of Kent Gavin airs January 15 at 10:30 p.m.
In Their Own Words: Queen Elizabeth II airs January 11 at 10 p.m.

January heralds several films spotlighting Britain's royal family. Among them is the two-hour special *Royalty Close Up: The Photography of Kent Gavin*, in which filmmaker Don Letts utilizes an extraordinary vault of previously unreleased images to explore the work of photojournalist Kent Gavin, who has spent more than 30 years photographing the royal family. From royal tours abroad to magical moments at Buckingham Palace, the prolific photographer has captured it all, documenting the family as it has changed and evolved throughout the years. The first hour covers the Queen and Diana, Princess of Wales; the second hour spotlights the next generation: Prince William, Prince Harry, and the Duchess of Cambridge, Kate Middleton (right). Also airing in January is *In Their Own Words: Queen Elizabeth II*, which through imagery and the monarch's own quotes follows her remarkable life.



COURTESY AMERICAN PUBLIC TELEVISION



finding your roots

with
HENRY LOUIS GATES, JR.



CRIST T. MATHEW/MATHEW IMAGING

WETA co-production airs Tuesdays at 8 p.m. on WETA TV 26/HD, beginning Jan. 5

A new season of the acclaimed series *Finding Your Roots*, now co-produced by WETA, features distinguished scholar Henry Louis Gates, Jr. exploring the mysteries, surprises and revelations hidden in the family trees of 28 new guest participants. Premiering January 5, Season 3 undertakes more fascinating journeys into genealogy through historical research and cutting-edge DNA technology. The engaging family stories in the 10-part new season illuminate the vast patchwork of ethnicity, race and experience that makes up the fabric of America.

“There is something essential in human nature that drives us to wonder where we came from,” said Gates, the Alphonse Fletcher University Professor at Harvard University and director of the Hutchins Center for African and African American Research. “We can’t truly know ourselves until we know something of our origins.”

Finding Your Roots, Season 3 explores the ancestral narratives of a wide variety of cultural trailblazers. In the programs, commentators **Bill O’Reilly** and **Bill Maher** and broadcast journalist **Soledad O’Brien** look into their shared Irish roots. *Modern Family*’s **Ty Burrell** seeks answers about his possible African lineage, and political organizer **Donna Brazile** hopes for clues to the mystery of her surname. Actor **Neil Patrick Harris** learns of an ancestor in colonial Virginia, and **Gloria Steinem** discovers that she was not her family’s first feminist.

Three figures in entertainment — **Maya Rudolph** (above, with Gates), **Shonda Rhimes** and **Keenen Ivory Wayans** — gain a new understanding of the struggle for

freedom that binds their families. **Jimmy Kimmel**, **Bill Hader** and **Norman Lear**, who share a gift for comedy, also share a history of family tragedies. **Julianne Moore**, **Patricia Arquette** and **Senator John McCain** learn about military service in their families throughout the centuries.

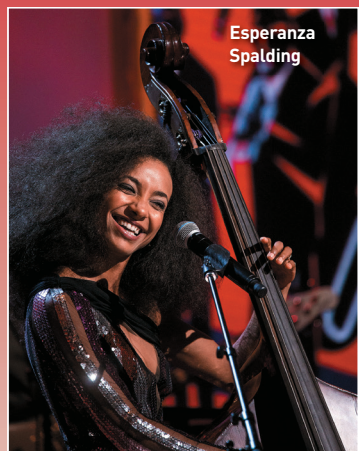
Actor **Mia Farrow** learns of a history of tragic deaths among her ancestors; and **Sean “Puffy” Combs** and **LL Cool J** learn of family histories long shrouded in mystery that shake them both to their cores. Additional participants in *Finding Your Roots*, Season 3 include business leader **Richard Branson**, writers **Azar Nafisi** and **Sandra Cisneros**, architects **Maya Lin** and **Frank Gehry**, actress **Juliana Margulies**, artist **Kara Walker** and chef **Lidia Bastianich**.

You can join the conversation with *#FindingYourRoots* on social media; and you can share your family history on PBS.org/FindingYourRoots, the WETA-produced series website. It features more about the programs, genealogical research, and a new education curriculum for middle-school and college students based on the series.

Finding Your Roots with Henry Louis Gates, Jr., Season 3 is a production of McGee Media, Inkwell Films, Kunhardt Films and WETA, in association with Ark Media. Gates — whose many film credits include the Peabody Award-winning 2013 series *The African Americans: Many Rivers to Cross* and who is currently collaborating with WETA on additional upcoming documentary series — is the writer and host of *Finding Your Roots*. Episodes of the series repeat Sundays at 4:30 p.m.

Major corporate support for *Finding Your Roots*, Season 3 is provided by Ancestry.com, Johnson & Johnson, POM and Ford. Support is also provided by the Ford Foundation, Candace King Weir, the Corporation for Public Broadcasting and PBS. The series’ new education curriculum is made possible through grants from the Robert Wood Johnson Foundation and the National Science Foundation.

Usher

James Taylor
and Keb' Mo'Esperanza
Spalding

A Celebration of American Creativity: In Performance at the White House

The WETA co-production airs Friday, January 8 at 9 p.m. on WETA TV 26/HD

A new all-star music special, the 55th production in the WETA series *In Performance at the White House*, honors the cultural resonance of art and literature in unique American musical forms. The program *A Celebration of American Creativity* was taped October 14 in the East Room of the White House and hosted by President and Mrs. Obama.

The concert commemorates the 50th anniversary of the National Foundation on the Arts and the Humanities Act that was signed into law by President Lyndon B. Johnson in September 1965. The Act called for the creation of the National Endowment for the Humanities (NEH) and the National Endowment for the Arts (NEA) as separate, independent agencies, the culmination of a movement calling for the federal government to invest in American cultural endeavors.

Song selections for the evening drew from American-originated musical genres, including blues, the American Songbook, and hip-hop (the first hip-hop performance in the *In Performance at the White House* broadcast series). *A Celebration of American Creativity* includes performances by Buddy Guy, Queen Latifah, MC Lyte, Audra McDonald, Keb' Mo', Smokey Robinson, Trombone Shorty, Esperanza Spalding, Brian Stokes Mitchell, James Taylor and Usher, with special readings and remarks from Carol Burnett.

Trombone Shorty



ALL BUT TOP CENTER: OFFICIAL WHITE HOUSE PHOTOS BY AMANDA LUDGON

Among the many offerings in the program are Spalding delivering "On the Sunny Side of the Street," Taylor and Mo' performing "I'm So Lonesome, I Could Cry," and Smokey Robinson singing "My Girl."

On the morning of the performance taping, First Lady Michelle Obama hosted "A Celebration of Song," an educational workshop held in the State Dining Room for more than 60 middle-school and high-school students from throughout the Greater Washington region. The event, held in collaboration with the GRAMMY Museum®, explored American cultural influences on music, and songwriting techniques.

To learn more about the program and the series *In Performance at the White House*, visit the WETA-produced program page at PBS.org/whitehouse.

Join the conversation with #PBSipwh on social media. WETA has produced *In Performance at the White House* since 1978. The series has spanned every administration since President Carter's and has embraced virtually every genre of American performing arts. *In Performance at the White House* was created to showcase American culture in the setting of the nation's most famous home.

A Celebration of American Creativity: In Performance at the White House is a production of WETA, CoMedia, Mark Krantz Productions, and Cappy Productions, in association with the GRAMMY Museum® at L.A. Live. The program repeats Sunday, January 10 at 1:30 p.m.

Funding for *A Celebration of American Creativity: In Performance at the White House* is provided by The LBJ Presidential Library, David M. Rubenstein, the Laurie M. Tisch Illumination Fund, the Howard Gilman Foundation, the Carnegie Corporation of New York, the Ford Foundation, The John S. and James L. Knight Foundation, the John D. and Catherine T. MacArthur Foundation and the Spencer Foundation. Air travel is generously provided by American Airlines.

Willie Nelson:

THE LIBRARY OF CONGRESS GERSHWIN PRIZE FOR POPULAR SONG

**WETA co-production airs Friday,
Jan. 15 at 9 p.m. on WETA TV 26/HD,
repeating Sunday, Jan. 17 at 2 p.m.**

WETA presents to a nationwide public television audience a new music special honoring singer-songwriter and guitar virtuoso Willie Nelson's receipt of the Library of Congress Gershwin Prize for Popular Song. The lively, 90-minute concert was taped November 18 at DAR Constitution Hall in Washington and features warm musical tributes to Nelson via performances of his top songs and others he has made his own through iconic recordings and decades of live performance.

The star-studded program *Willie Nelson: The Library of Congress Gershwin Prize* spotlights performances by Nelson; as well as Edie Brickell; Leon Bridges; Buckwheat Zydeco; Rosanne Cash; Michael Feinstein; Ana Gabriel; Jamey Johnson; Alison Krauss; Cyndi Lauper; Raul Malo of The Mavericks; Lukas Nelson, Micah Nelson and Promise of the Real; Neil Young; and past Gershwin Prize honoree Paul Simon — with Don Was as music director and actor Don Johnson as emcee. The concert's song list includes Nelson classics such as "Whiskey River," "Crazy," "Funny How Time Slips Away," and many of his other top hits.

In the program, Nelson is presented the Library of Congress Gershwin Prize for Popular Song — named in honor of George and Ira Gershwin — from David Mao, Acting Librarian of Congress, and a delegation of members of Congress. The Prize, which recognizes



the profound and positive effect of popular music on the world's culture, was first awarded in 2007. Honorees include Paul Simon, Stevie Wonder, Sir Paul McCartney, Burt Bacharach and Hal David, Carole King and Billy Joel. WETA has produced the television production for PBS since the award's inception. This year's program is a co-production of WETA and Bounce AEG.

With a career that spans six decades, Nelson has put his imprint forever on country music and introduced it to new audiences as he has crossed into jazz, blues, folk, rock and Latin styles. With 200-plus recordings, the iconic Texan is the creative genius behind the historic albums *Shotgun Willie*, *Red Headed Stranger* and *Stardust*, and the songwriter of a host of country-music standards. Nelson has earned numerous awards as a musician and earned extensive credentials as an author, actor and activist.

To learn more about the program, visit the WETA-produced website at [PBS.org/GershwinPrize](https://www.pbs.org/GershwinPrize).



Funding for *Willie Nelson: The Library of Congress Gershwin Prize for Popular Song* is provided by The Ira and Leonore Gershwin Fund and The Leonore S. Gershwin Trust FBO The Library of Congress Trust Fund Board. Major funding is also provided by the Corporation for Public Broadcasting, PBS and public television viewers. Air transportation is generously provided by United Airlines.

Join the conversation with
[#PBSGershwin](https://www.pbs.org/GershwinPrize) on social media.

Downton Abbey 6 on Masterpiece

The final season of the acclaimed series airs **Sundays at 9 p.m.**
beginning **January 3 on WETA TV 26/HD**
(and **WETA reprises Season 5 on January 3, 8:30 a.m.-8 p.m.**)



It is the end of an era as the enormously appealing, epic costume drama that has captivated American audiences since 2011 enters its sixth and final season this month. The most popular series in *Masterpiece's* 44-year history, the top-rated PBS drama of all time, and one of the most-watched dramas on American television (and worldwide), *Downton Abbey* unfolds its last chapter in nine episodes, revealing where fate, passion, ambition and duty will lead the beloved characters. What will become of the grand estate — and of Robert and Cora? Will Lady Mary or Lady Edith find love again? Will Anna and John Bates be exonerated and finally find peace? And will the rest of the family and staff find happiness and success?

Written and created by Julian Fellowes, the co-production of Carnival Films and *Masterpiece* opened *Season 1* with a crisis sparked by the sinking of the *Titanic* in 1912. Having weathered the demise of a string of heirs, the horrors of World War I, the Spanish flu, false convictions and romantic betrayals, not to mention the compromising death of a Turkish diplomat in the throes of passion, *Downton Abbey* is primed for new surprises in Season 6.

The final season opens in 1925 with a series of crises reflecting the momentous changes that are transforming society. Women's rights have given Lady

Mary and Lady Edith new positions of responsibility: Mary runs the estate, and Edith manages the magazine she inherited from Michael Gregson. Meanwhile, Tom Branson heads for Boston, and newlyweds Lady Rose and Atticus Aldridge are trying their luck in Jazz Age New York. Anna Bates faces a murder charge, though many still suspect her husband. And for the rest of the servants, troubling doubts hang over their jobs. Will great houses and the fortunes that support them soon be gone? How will they make their way in the modern era?

With 59 Emmy nominations, more than any other British show in Emmy history, *Downton Abbey* is one of the most honored series on television, having captured 11 Emmys, three Golden Globes,

three Screen Actors Guild Awards, a Producers Guild Award, and three BAFTAs. Since *Downton Abbey's* first season, its audience has more than doubled, reaching more than 25 million viewers in *Season 5* last year.

So why end the series? Carnival's Gareth Neame, an executive producer for the production, explained the difficult decision to cue the final curtain: "We wanted to close the doors of *Downton Abbey* when it felt right and natural for the storylines to come together, and when the show was still being enjoyed so much by its fans. We can promise a final season full of all the usual drama and intrigue, but with the added excitement of discovering how and where they all end up."

Making their bittersweet farewell are cast members Hugh Bonneville (Robert); Elizabeth McGovern (Cora); Michelle Dockery (Mary); Laura Carmichael (Edith); Maggie Smith (Violet); Penelope Wilton (Isobel); Jim Carter (Carson); Phyllis Logan (Mrs. Hughes), Brendan Coyle (John Bates); Joanne Froggatt (Anna Bates); Robert James-Collier (Thomas); Lesley Nicol (Mrs. Patmore); and all the rest.

Cheerio, friends, and thanks for the memories!



Funding for *Downton Abbey, Season 6 on Masterpiece* is provided by Viking River Cruises and Ralph Lauren Corporation with additional support from public television viewers and contributors to The Masterpiece Trust, created to help ensure the series' future. Local funding for the broadcast is provided by Cancer Treatment Centers of America, and the National Gallery of Art.

MERCY STREET

**New drama series set in Alexandria
airs Sundays at 10 p.m., January 17
to February 21 on WETA TV 26/HD**

A new, original PBS drama series reveals the stories of Americans struggling to save lives while managing their own hardships on the home front during the turbulent early years of the Civil War. Inspired by memoirs and letters from real doctors and nurse volunteers at Alexandria, Virginia's Mansion House Hospital, the six-part medical drama *Mercy Street* follows a diverse cast of characters who intersect in the chaotic world of the Union-occupied city in the spring of 1862. The series stars a large cast that includes Josh Radnor (*How I Met Your Mother*), Mary Elizabeth Winstead, Gary Cole (*Veep*, *The Good Wife*) and Hannah James.

Locations in Richmond and Petersburg, Virginia, stand in for the Mansion House, which once faced Alexandria's Fairfax Street and was a renowned luxury hotel created by the Green family in front of their home, the historic 18th-century mansion Carlyle House. With the outbreak of the war, Union troops occupied the hotel and converted it into a Union Army medical facility. *Mercy Street* follows two volunteer nurses on opposite sides of the conflict, Mary Phinney, a fiery New England abolitionist, and Emma Green, a naïve young Confederate belle, who collide at the hospital.

From the creative team of Ridley Scott (*Gladiator*); David W. Zucker (*The Good Wife*); Lisa Q. Wolfinger and David Zabel (*ER*), *Mercy Street* is based on historical and composite characters, and the drama combines real and dramatized places and events as backdrops for its storylines. To ensure historical accuracy, the producers engaged an all-star team of advisors headed by noted historian James McPherson and including leading experts on Civil War medicine, military history, African-

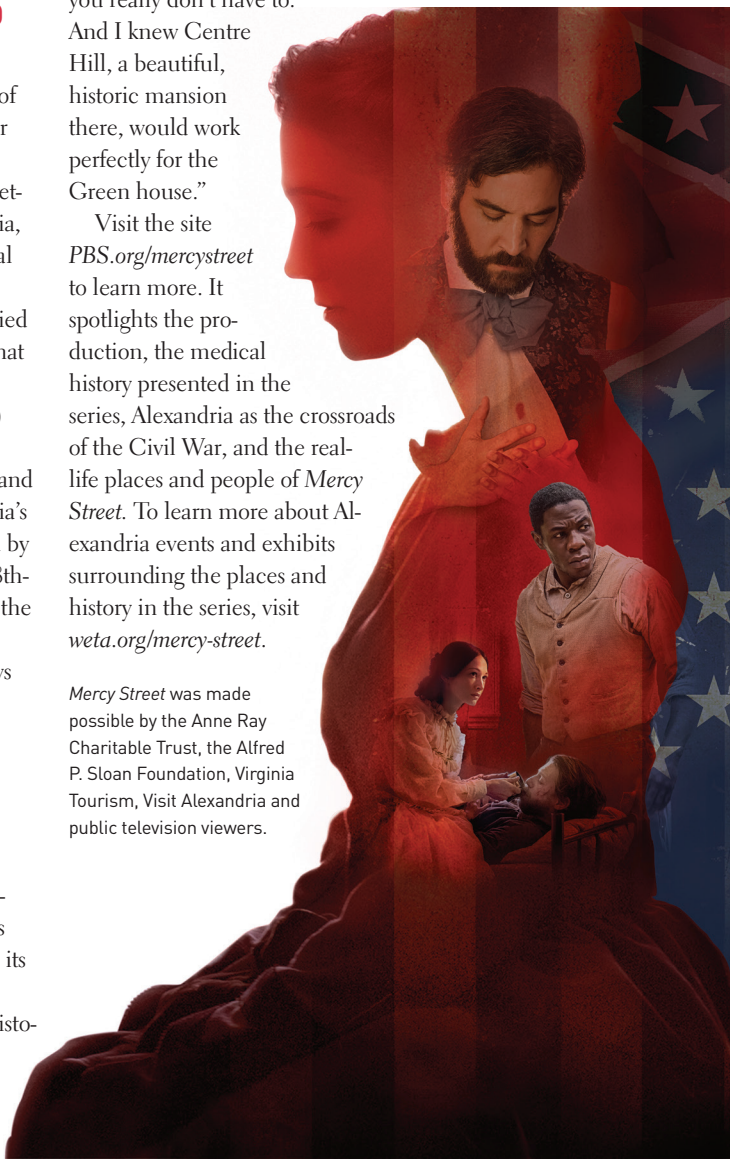
American history, women in the Civil War era and more.

The filmmakers enjoyed the opportunity to work in historic locations in the Commonwealth. "I spent quite a few years looking for locations," Wolfinger said, "and I looked to Virginia first. I knew we had to shoot in practical locations versus building sets on a sound stage. Petersburg itself is almost like a Civil War back lot — Spielberg shot much of *Lincoln* there and did very little to it because you really don't have to.

And I knew Centre Hill, a beautiful, historic mansion there, would work perfectly for the Green house."

Visit the site PBS.org/mercystreet to learn more. It spotlights the production, the medical history presented in the series, Alexandria as the crossroads of the Civil War, and the real-life places and people of *Mercy Street*. To learn more about Alexandria events and exhibits surrounding the places and history in the series, visit weta.org/mercy-street.

Mercy Street was made possible by the Anne Ray Charitable Trust, the Alfred P. Sloan Foundation, Virginia Tourism, Visit Alexandria and public television viewers.



More for Drama Fans

If you enjoy great dramas, be sure to tune in to WETA TV 26 & WETA HD this month for *Doc Martin*, *Series 7*; *Luther*; *The Inspector Lynley Mysteries*; and *Masterpiece Mystery!*: *Sherlock: The Abominable Bride* — and for upcoming *Masterpiece* series *Mr. Selfridge*, *Season 4*, coming in March, and *Grantchester*, *Season 2*, which premieres in April. For an impressive slate of additional contemporary dramas, sample the offerings each month of the WETA UK channel, which features British series including *Midsomer Murders*, *Father Brown*, *Vera* and *MI-5* and classics such as *Prime Suspect*, *Foyle's War* and *Poirot* — around the clock!

WETA TV 26 & WETA HD

January primetime simulcast listings.

Weeknight primetime simulcast programming repeats the following weekday on WETA TV 26 starting at noon.

	8:00		8:30	9:00	9:30	10:00	10:30
1 Fri	The Manners of <i>Downton Abbey</i> : A Masterpiece Special			Masterpiece Mystery!: Sherlock: The Abominable Bride			Great Perf.: From Vienna: New Year's Celebration (to 12m)
2 Sat	Luther, Series I (Pt 1 of 6)			The WETA Movie: Dial M for Murder (to 10:46pm)			(10:46pm:) The Man Who Lost His Head (to 12:15am)
3 Sun	Countdown to <i>Downton Abbey</i>			<i>Downton Abbey</i> , Season 6 on Masterpiece (Pt 1 of 9) (to 10:12pm)		(10:12pm:) A Celebration of <i>Downton Abbey</i> (to 11pm) & Luther, Pt 1 (to 12m)	
4 Mon	Antiques Roadshow: Spokane, WA (Ep 1 of 3)			Antiques Roadshow: Pittsburgh, PA (Ep 2 of 3)		Diana vs. The Queen (to 11pm) & Indep. Lens: Chuck Norris vs. Communism (to 12m)	
5 Tue	Finding Your Roots, Season 3 (Pt 1 of 10. <i>The Stories We Tell</i>)			Frontline: Netanyahu at War			
6 Wed	Nature: Animal Odd Couples			NOVA: Secret Tunnel Warfare		Particle Fever (to 12m)	
7 Thu	The Inspector Lynley Mysteries, Series I: Well-Schooled in Murder				The Inspector Lynley Mysteries, Series I: Payment in Blood		
8 Fri	Washington Week with Gwen Ifill	WETA Arts	A Celebration of American Creativity: In Performance at the White House:		Eddie Murphy: The Kennedy Center Mark Twain Prize (to 11:30pm)		
9 Sat	Luther, Series I (Pt 2 of 6)			The WETA Movie: Murder, My Sweet (to 10:36pm)			(10:36pm:) Shirley Temple: America's Little Darling
10 Sun	Doc Martin, Series 7 (Pt 1 of 8)			<i>Downton Abbey</i> , Season 6 on Masterpiece (Pt 2 of 9)		Secrets of Highclere Castle (to 11pm) & Luther, Pt 2 (to 12m)	
11 Mon	Antiques Roadshow: Spokane, WA (Ep 2 of 3)			Antiques Roadshow: Pittsburgh, PA (Ep 3 of 3)		In Their Own Words: Queen Elizabeth II (to 11pm) & Indep. Lens: Autism in Love (to 12:30am)	
12 Tue	Finding Your Roots, Season 3 (Pt 2 of 10. <i>The Irish Factor</i>)			PBS NewsHour Special Report: State of the Union Address			
13 Wed	Nature: Natural Born Hustlers (Ep 1 of 3. <i>Staying Alive</i>)			NOVA: Life's Rocky Start		Earth's Natural Wonders (Ep 1 of 3. <i>Extreme Wonders</i>)	
14 Thu	The Inspector Lynley Mysteries, Series I: For the Sake of Elena				Doc Martin, Series 7 (Pt 1 of 8)		Inside Asprey: Luxury By Royal Appointment (to 11:30pm)
15 Fri	Washington Week with Gwen Ifill	Pizza in Washington	Willie Nelson: The Library of Congress Gershwin Prize for Popular Song				Royalty Close Up: Photography of Kent Gavin (to 12:30am)
16 Sat	Luther, Series I (Pt 3 of 6)			The WETA Movie: Moonstruck (to 10:42pm)			(10:42pm:) Doc Martin: The Movie (to 12:09am)
17 Sun	Doc Martin, Series 7 (Pt 2 of 8)			<i>Downton Abbey</i> , Season 6 on Masterpiece (Pt 3 of 9)		Mercy Street (Pt 1 of 6. <i>The New Nurse</i>) (to 11pm) & Luther Pt 3 (to 12m)	
18 Mon	Antiques Roadshow: Spokane, WA (Ep 3 of 3)			Antiques Roadshow: El Paso, TX (Ep 1 of 3)		In Their Own Words: Muhammad Ali (to 11pm) & Indep. Lens: Little White Lie (to 12m)	
19 Tue	Finding Your Roots, Season 3 (Pt 3 of 10. <i>In Search of Freedom</i>)			Bonnie & Clyde: American Experience		Frontline: Supplements and Safety	
20 Wed	Nature: Natural Born Hustlers (Ep 2 of 3. <i>The Hunger Hustle</i>)			NOVA: Mystery Beneath the Ice		Earth's Natural Wonders (Ep 2 of 3. <i>Wonders of Water</i>)	
21 Thu	The Inspector Lynley Mysteries, Series I: Missing Joseph				Doc Martin, Series 7 (Pt 2 of 8)		Mercy Street (Pt 1 of 6) (to 11:30pm)
22 Fri	Washington Week with Gwen Ifill	Burgers in Washington	Great Performances at the Met: Il Trovatore (to 12m)				
23 Sat	Luther, Series I (Pt 4 of 6)			The WETA Movie: Presumed Innocent (to 11:07pm)			
24 Sun	Doc Martin, Series 7 (Pt 3 of 8)			<i>Downton Abbey</i> , Season 6 on Masterpiece (Pt 4 of 9)		Mercy Street (Pt 2 of 6. <i>The Haversack</i>) (to 11pm) & Luther Pt 4 (to 12m)	
25 Mon	Antiques Roadshow: Little Rock, AR (Ep 1 of 3)			In Defense of Food (to 11pm) & Indep. Lens: No Mas Bebes (to 12m)			
26 Tue	Finding Your Roots, Season 3 (Pt 4 of 10. <i>Tragedy + Time = Comedy</i>)			The Mine Wars: American Experience			
27 Wed	Nature: Natural Born Hustlers (Ep 3 of 3. <i>Sex, Lies & Dirty Tricks</i>)			NOVA: Himalayan Megaquake		Earth's Natural Wonders (Ep 3 of 3. <i>Living Wonders</i>)	
28 Thu	The Inspector Lynley Mysteries, Series II: Playing for the Ashes				Doc Martin, Series 7 (Pt 3 of 8)		Mercy Street (Pt 2 of 6) (to 11:30pm)
29 Fri	Washington Week with Gwen Ifill	An Evening with Sheila Johnson — with Gwen Ifill	Mike Nichols: American Masters		The Boomer List: American Masters (to 12m)		
30 Sat	Luther, Series I (Pt 5 of 6)			The WETA Movie: The Postman Always Rings Twice			
31 Sun	Doc Martin, Series 7 (Pt 4 of 8)			<i>Downton Abbey</i> , Season 6 on Masterpiece (Pt 5 of 9)		Mercy Street (Pt 3 of 6. <i>The Uniform</i>) (to 11pm) & Luther Pt 5 (to 12m)	
	8:00	8:30	9:00	9:30	10:00	10:30	

PBS NewsHour airs weeknights at 7 p.m.

Charlie Rose airs late weeknights (check listings)

Denotes WETA productions, co-productions and presentations

For full schedules and program information, visit weta.org

WETA TV 26 & WETA HD

January simulcast primetime listings, plus weekends for WETA TV 26

- Programming on WETA TV 26 and WETA HD is exactly the same — simulcast — Monday through Friday from 7 p.m. through *Charlie Rose*, and weekend evenings, beginning at 6 p.m. Saturdays and 5:30 p.m. Sundays.
- Please note that Saturday and Sunday *daytime* listings that follow are for WETA TV 26 only unless otherwise indicated. For complete 24-hour schedules of programs on WETA TV 26 and WETA HD, visit weta.org/tv.
- The weeknight primetime schedule on WETA TV 26 often repeats the next weekday afternoon on WETA TV 26.
- WETA TV 26 is devoted to children's programming 5 a.m.–noon weekdays and 6–9 a.m. Sundays. For 24 hours of children's programming each day, tune in to the WETA Kids channel. See page 18 for schedule information.

Program Key

■ — WETA productions, co-productions or presentations. {DVI} — Descriptive Video Service. R — Aired within the month. Listings are accurate as of press time. For late-breaking program updates, call 703-998-2724 or visit weta.org/tv.

©ROBERT VIGLASKY/HARTSWOOD FILMS & BBC WALES FOR BBC ONE/MASTERPIECE



Friday, January 1 at 9 p.m. on WETA TV 26/HD

Masterpiece Mystery!: Sherlock: The Abominable Bride, a special presentation, stars Benedict Cumberbatch and Martin Freeman as Holmes and Watson in an investigation set in Victorian London.

1 Friday

7:30AM MASTERPIECE MYSTERY!: SHERLOCK, SERIES 2 —

WETA reprises the mystery drama's second season, featuring adaptations set in 21st-century London and starring Benedict Cumberbatch as Sherlock Holmes and Martin Freeman as Dr. Watson. Episode 1, *A Scandal in Belgravia*, airs 7:30–9 a.m.; Episode 2, *The Hounds of Baskerville*, airs 9–10:30 a.m.; and Episode 3, *The Reichenbach Fall*, airs 10:30–noon.

12N MASTERPIECE MYSTERY!: SHERLOCK, SERIES 3 —

WETA reprises the mystery drama's third season, starring Benedict Cumberbatch and Martin Freeman. Episode 1, *The Empty Hearse*, airs noon–2 p.m.; Episode 2, *The Sign of Three*, airs 2–4 p.m.; and Episode 3, *His Last Vow*, airs 4–6 p.m.

6:00 BBC WORLD NEWS/NIGHTLY BUSINESS REPORT

7:00 PBS NEWSHOUR

8:00 **THE MANNERS OF DOWNTON ABBEY: A MASTERPIECE SPECIAL** — Enter the world of Edwardian manners with Alastair Bruce, historical advisor to *Masterpiece's* *Downton Abbey* production. Bruce and the series' leading cast members explain how they re-create the authentic etiquette of aristocrats and servants. **Repeats** Sat 1/2, 7pm; Mon 1/4, 2:30pm; Tue 1/5, 4pm; Wed 1/6, 1pm; Sun 1/10, 7pm

9:00 **MASTERPIECE MYSTERY!: SHERLOCK: THE ABOMINABLE BRIDE** — Benedict Cumberbatch and Martin Freeman reprise their roles as Sherlock Holmes and Dr. Watson in a special case set in 1890s London. Mary Morstan (Amanda Abbington), Inspector Lestrade (Rupert Graves) and Mrs. Hudson (Una Stubbs) also turn up at 221b Baker Street.

10:32 **GREAT PERFORMANCES: FROM VIENNA: THE NEW YEAR'S CELEBRATION 2016** — The Vienna Philharmonic, under the baton of Mariss Jansons, performs favorite Strauss Family waltzes at the opulent Musikverein concert hall, accompanied by the Vienna City Ballet. Stage and screen legend Julie Andrews returns as host, touring the picturesque city.

12M **CHARLIE ROSE** — **Repeats next weekday, noon**

2 Saturday

ON WETA TV 26, 6AM–6PM. See weta.org/tv for listings.

6AM–8:30AM WETA COOKING SHOWS

8:30 **RICK STEVES' EUROPE**

9:00 **EASTENDERS** — (two episodes) **Repeats Fridays, 5pm**

10:00 **THE THIS OLD HOUSE HOUR**

11AM–6PM **WETA COOKING SHOWS**

SIMULCAST ON WETA TV 26 & WETA HD, 6PM–12:15AM:

6:00 **PBS NEWSHOUR WEEKEND**

6:30 **HONORED TO SERVE: REMEMBERING VIETNAM**

7:00 **THE MANNERS OF DOWNTON ABBEY** — R

8:00 **LUTHER, SERIES I** — Idris Elba (*The Wire*) stars as intellectually brilliant, emotionally impulsive detective John Luther in a gripping, psychological BBC thriller. Ruth Wilson portrays the murderer he pursues. *Part 1 of 6.* DCI John Luther returns to work after a spell of leave following the traumatic arrest of the serial killer Henry Madsen. Luther's next case is investigating the murder of the parents of child genius Alice Morgan.

Repeats Sun 1/3, 11pm; Mon 1/4, 1:30pm

9:00 **THE WETA MOVIE: DIAL M FOR MURDER** — In Alfred Hitchcock's 1954 suspense-mystery, an adaptation of a Frederick Knott play, a husband's plot to murder his unfaithful wife goes awry. Ray Milland, Grace Kelly and Robert Cummings star. (1:46)

10:46 **THE MAN WHO LOST HIS HEAD, WITH MARTIN CLUNES** — A light-hearted made-for-TV comic-drama about cultural repatriation centers around a repressed British museum curator, Ian Bennet (Martin Clunes of *Doc Martin*), who is sent to assess the possible return of an ancient Maori carving to a small, fictional New Zealand town. It sounds like an easy assignment for Bennet, but surprises await him. (90 min.)

3 Sunday

ON WETA TV 26, 6AM–12N. See weta.org/hd for WETA HD.

6AM–8AM WETA KIDS PROGRAMMING



Saturdays at 8 p.m. beginning January 2 on WETA TV 26/HD

Luther, an acclaimed BBC crime-thriller series, stars Idris Elba as a brilliant London police detective deeply affected by his work.

FINDING YOUR ROOTS, SEASON 3 WITH HENRY LOUIS GATES, JR.



CRAIG T. MATTHEW/MATTHEW IMAGING

A WETA CO-PRODUCTION

Tuesdays at 8 p.m. beginning January 5 on WETA TV 26/HD
Finding Your Roots with Henry Louis Gates, Jr., a WETA co-production, explores genealogies of 28 new guests, including actor Bill Hader.

SIMULCAST ON WETA TV 26 & WETA HD, 8:30AM-12M:

- 8:30AM-5:30PM MASTERPIECE CLASSIC: DOWNTON ABBEY, SEASON 5** — In a marathon presentation, WETA reprises the drama's entire penultimate series, Season 5, leading into the final season that premieres tonight. Season 5 airs in nine parts, following the Crawley family and the estate's staff as they adjust to life in the Roaring Twenties. Part 9 airs after *PBS NewsHour*.
- 5:30 PBS NEWSHOUR WEEKEND**
- 6:00 MASTERPIECE CLASSIC: DOWNTON ABBEY, SEASON 5** — The Season 5 marathon concludes with Part 9.
- 8:00 COUNTDOWN TO DOWNTON ABBEY** — Host Kelli O'Hara counts down the premiere of the final season with cast and filmmaker interviews celebrating the impact of the beloved drama and offering sneak peeks at the twists and turns that lie in store for the characters.
- 9:00 DOWNTON ABBEY, SEASON 6 ON MASTERPIECE** — As the final season of the popular drama opens, the year is 1925. Momentous changes threaten the great house, its owners and staff, and past scandals loom. *Episode 1 of 9*. Extortion and downsizing threaten *Downton Abbey*. Change is afoot at the hospital. Mrs. Hughes poses a delicate question. Daisy speaks her mind, and Anna and Bates wait for the word. {DVI} **Repeats Mon 1/4, 3:30pm**
- 10:12 DOWNTON ABBEY: A CELEBRATION** — A program savors favorite moments from past seasons of the drama and offers hints of what's to come in clips from upcoming episodes, along with behind-the-scenes interviews with cast and producers.
- 11:00 LUTHER, SERIES I** — *Part 1 of 6*. See the Saturday, January 2, 8 p.m. listing. **R**

4 Monday

- 7:00 PBS NEWSHOUR**
- 8:00 ANTIQUES ROADSHOW: SPOKANE, WA** — *Episode 1 of 3*. **Repeats Tue 1/5, 1:30pm; Wed 1/6, 2pm**
- 9:00 ANTIQUES ROADSHOW: PITTSBURGH, PA** — *Episode 2 of 3*. **Repeats Tue 1/5, 2:30pm; Wed 1/6, 3pm**
- 10:00 DIANA VS. THE QUEEN** — A program charts the troubled relationship between Queen Elizabeth II and Princess Diana; one remote and pragmatic, the other emotional and insecure. This revealing documentary charts the two women's relationship from its very beginnings, through the royal wedding to Diana's emergence as a global superstar, and ending with a final showdown over Diana's funeral. **Repeats Tue 1/5, 5pm; Thur 1/7, 1pm; Sat 1/9, 7pm**
- 11:00 INDEPENDENT LENS: CHUCK NORRIS VS. COMMUNISM** — The independent film series features a production that documents how the power of cinema ignited a revolution in 1980s Romania, as an intrepid VHS bootlegger and a brave translator brought western movies to audiences behind the Iron Curtain.
- 12M CHARLIE ROSE** — **Repeats next weekday, noon**

5 Tuesday

- 7:00 PBS NEWSHOUR**
- 8:00 FINDING YOUR ROOTS, SEASON 3** — In this WETA co-production, Harvard scholar Henry Louis Gates, Jr., delves into the genealogy of 28 new guests, illuminating the vast patchwork of ethnicity, race and experience that makes up the fabric of America. *Part 1 of 10. The Stories We Tell*. Gates explores the unsolved mysteries behind the family stories of political organizer Donna Brazile, actor Ty Burrell and artist Kara Walker as they learn how the legacy of slavery has shaped their identities. **Repeats Wed 1/6, 5pm; Sun 1/10, 4:30pm**
- 9:00 FRONTLINE: NETANYAHU AT WAR** — *Frontline* explores the inside story of the bitter clash between President Obama and Israeli Prime Minister Netanyahu and their battle over Iran's nuclear program.
- 11:00 CHARLIE ROSE** — **Repeats next weekday, noon**

6 Wednesday

- 7:00 PBS NEWSHOUR**
- 8:00 NATURE: ANIMAL ODD COUPLES** — *Nature* meets unlikely animal couples whose cross-species relationships and long-term bonds seem to offer real proof that humans are not the only animals capable of emotions and friendships. Animal behavior experts offer their insights. {DVI} **Repeats Thur 1/7, 2pm**
- 9:00 NOVA: SECRET TUNNEL WARFARE** — During World War I, the Allies devised a devastating plan, planting 600 tons of explosives in secret tunnels driven under German trenches. *NOVA* uncovers traces of the operation and learns why it failed to break the deadlock of trench warfare. {DVI} **Repeats Thur 1/7, 3pm**
- 10:00 PARTICLE FEVER** — A film follows six brilliant scientists for the launch of the Large Hadron Collider, built to recreate the conditions of the Big Bang and search for the Higgs boson and marking the start of the biggest and most expensive experiment in the history of the planet. {DVI} **Repeats Thur 1/7, 4pm**
- 12M CHARLIE ROSE** — **Repeats next weekday, noon**

7 Thursday

- 7:00 PBS NEWSHOUR**
- 8:00 THE INSPECTOR LYNLEY MYSTERIES, SERIES I: WELL-SCHOOLED IN MURDER** — In the popular 2002 drama, Nathaniel Parker and Sharon Small star as Scotland Yard's sophisticated Inspector Thomas Lynley and his partner, prickly working class Sergeant Barbara Havers, investigating a series of murders based on Elizabeth George's mysteries. *Well-Schooled in Murder*. The duo probes the slaying of a student at an elite boarding school. **Repeats Fri 1/8, 1pm**
- 9:30 THE INSPECTOR LYNLEY MYSTERIES, SERIES I: PAYMENT IN BLOOD** — Lynley and Havers investigate the murder of a playwright after a drama rehearsal at a Scottish estate. **Repeats Fri 1/8, 2:30pm**
- 11:00 CHARLIE ROSE** — **Repeats next weekday, noon**



©BBC 2001

Thursdays at 8 p.m. beginning January 7 on WETA TV 26/HD
The Inspector Lynley Mysteries follows the investigations of a Scotland Yard duo with clashing personalities and backgrounds. Nathaniel Parker and Sharon Small star as Lynley and Sgt. Havers.

A CELEBRATION OF AMERICAN CREATIVITY: IN PERFORMANCE AT THE WHITE HOUSE



A WETA CO-PRODUCTION

Friday, January 8 at 9 p.m. on WETA TV 26/HD

WETA series *In Performance at the White House* presents a special concert celebrating American creativity. See page 4 for details. Above: Brian Stokes Mitchell performs with Audra McDonald.

8 Friday

7:00 **PBS NEWSHOUR**

8:00 **WASHINGTON WEEK WITH GWEN IFILL** — In WETA's long-running production, moderator and managing editor Gwen Ifill leads a discussion by a panel of top journalists on the news events of the week. **Repeats Sat 1/9, 6:30pm**

8:30 **WETA ARTS** — The WETA TV 26 arts magazine spotlights the Gay Men's Chorus of Washington; a photographer who turns food into art; sculptor Dale Chihuly's monumental garden of glass; a Smithsonian American Art Museum exhibit of striking images ("Irving Penn: Beyond Beauty,"); and more.

9:00 **A CELEBRATION OF AMERICAN CREATIVITY: IN PERFORMANCE AT THE WHITE HOUSE** — A WETA co-production presents an all-star concert — hosted by President and Mrs. Obama in the East Room — celebrating art and literature in American musical forms. The event commemorates the 50th anniversary of the National Foundation on the Arts and the Humanities Act. See page 4 for details. **Repeats Sunday, 1/10, 1:36pm**

10:00 **EDDIE MURPHY: THE KENNEDY CENTER MARK TWAIN PRIZE** — The special, a co-production of WETA; CoMedia; Mark Krantz Productions; Cappy Productions; and The John F. Kennedy Center for the Performing Arts, celebrates comedian and actor Eddie Murphy as he receives the Kennedy Center Mark Twain Prize for American Humor. A lineup of top entertainers salutes Murphy from the stage at the Kennedy Center. **Repeats Sat 1/9, 11:34pm; Sun 1/10, 2:35pm**

11:30 **CHARLIE ROSE: THE WEEK**

12M **CHARLIE ROSE** — **Repeats next weekday, noon**

9 Saturday

ON WETA TV 26, 6AM–6PM. See weta.org/tv for listings.

SIMULCAST ON WETA TV 26 & WETA HD, 6PM–1AM:

6:00 **PBS NEWSHOUR WEEKEND**

6:30 **WASHINGTON WEEK WITH GWEN IFILL** — R

7:00 **DIANA VS. THE QUEEN** — R

8:00 **LUTHER, SERIES I** — A crime thriller stars Idris Elba and Ruth Wilson. *Part 2* of 6. Luther must out-manuever a trained sniper who is out to kill police officers. But as the body count rises, he has to uncover the killer's true motives. Meanwhile, Alice has been investigating Luther and to his horror, seems to know what happened to Madsen during his arrest. She baits him further by asking what Zoe would think if she knew the truth. **Repeats Sun 1/10, 11pm; Mon 1/11, 2pm**

9:00 **THE WETA MOVIE: MURDER, MY SWEET** — Edward Dmytryk's 1944 crime drama, considered by many to be the definitive private eye "film noir," adapts Raymond Chandler's "Farewell, My Lovely." The film stars Dick Powell as gumshoe Philip Marlowe, whose search for a thug's ex-girlfriend leads him into a convoluted plot of blackmail. (1:36) **Repeats Sun 1/10, noon**

10:36 **SHIRLEY TEMPLE: AMERICA'S LITTLE DARLING** — By the age of four, Shirley Temple had become a film star adored by adults and children alike, and had already broken records at the box office. A film biography offers a retrospective of the life and times of the child star.

11:04 **BBC ANTIQUES ROADSHOW**

11:34 **EDDIE MURPHY: THE KENNEDY CENTER MARK TWAIN PRIZE** — R

10 Sunday

ON WETA TV 26, 6AM–12N. See weta.org/hd for WETA HD.

6AM–9AM WETA KIDS PROGRAMMING

9:00 **WHITE HOUSE CHRONICLES**

9:30 **TO THE CONTRARY WITH BONNIE ERBE**

10:00 **THIS IS AMERICA WITH DENNIS WHOLEY**

10:30 **RELIGION AND ETHICS NEWSWEEKLY**

11:00 **THE OPEN MIND** — Alexander Heffner hosts a weekly excursion into the world of ideas, exploring issues of national and public concern with distinguished guests.

11:30 **THE McLAUGHLIN GROUP** — The weekly public affairs series features a discussion by a group of pundits, led by John McLaughlin, of current political issues.

SIMULCAST ON WETA TV 26 & WETA HD, 12N–12M:

11:58 **THE WETA MOVIE: MURDER, MY SWEET** — (1:36) R

1:36 **A CELEBRATION OF AMERICAN CREATIVITY: IN PERFORMANCE AT THE WHITE HOUSE** — R

2:31 **EDDIE MURPHY: THE KENNEDY CENTER MARK TWAIN PRIZE** — R

4:00 **HONORED TO SERVE: ULTIMATE SACRIFICE**

4:30 **FINDING YOUR ROOTS, SEASON 3** — *Part 1* of 10. *The Stories We Tell*. R

5:30 **SCI-TECH NOW**

6:00 **PBS NEWSHOUR WEEKEND**

6:30 **HONORED TO SERVE: NEVER FORGOTTEN**

7:00 **THE MANNERS OF DOWNTON ABBEY: A MASTERPIECE SPECIAL** — R

8:00 **DOC MARTIN, SERIES 7** — Martin Clunes reprises his role as Dr. Martin Ellingham. Heartbroken after Louisa's (Caroline Catz) departure at the end of Season 6, the new series finds Martin ready to make some changes and win his family back. *Part 1* of 8. The new season opens back in Portwenn, but Louisa has left to visit her mother in Spain and gain some perspective on her marriage. Martin is faced with questions: Will Louisa come back to him? **Repeats Mon 1/11, 5pm; Thur 1/14, 9:30pm; Fri 1/15, 2:30pm; Sat 1/16, 7pm; Sun 1/17, 7pm**

9:00 **DOWNTON ABBEY, SEASON 6 ON MASTERPIECE** — *Part 2* of 9. Wedding plans hit a snag. Pigs lead to trouble for Edith and Marigold. Thomas gets a hint. Anna has a secret appointment. Violet and Isobel lock horns over health care. (DVI) **Repeats Mon 1/11, 4pm**

10:00 **SECRETS OF HIGHCLERE CASTLE** — The 1,300-year-old English castle, now famous as the setting of *Downton Abbey*, was the social epicenter of Edwardian England. See how the inhabitants of Highclere lived, from the aristocrats who enjoyed a life of luxury to the army of servants toiling "below stairs." **Repeats Mon 1/11, 3pm; Tue 1/12, 4pm; Thur 1/14, 2pm**

11:00 **LUTHER, SERIES I** — *Part 2* of 6. See the Saturday, January 9, 8 p.m. listing. R



Sundays at 8 p.m. beginning January 10 on WETA TV 26/HD

A new season of *Doc Martin* features Martin Clunes as the comically brusque village doctor and Caroline Catz as his estranged wife.

WILLIE NELSON: THE LIBRARY OF CONGRESS GERSHWIN PRIZE FOR POPULAR SONG

PHOTO BY SCOTT HEINICHSEN PHOTOGRAPHY



A WETA CO-PRODUCTION

Friday, January 15 at 9 p.m. on WETA TV 26/HD

The WETA co-production *Willie Nelson: The Library of Congress Gershwin Prize for Popular Song* presents a special DAR concert honoring the iconic musical artist. See page 5 for details.

11 Monday

7:00 **PBS NEWSHOUR**

8:00 **ANTIQUES ROADSHOW: SPOKANE, WA** — *Episode 2 of 3. Repeats Tue 1/12, 1:30pm; Wed 1/13, 1pm*

9:00 **ANTIQUES ROADSHOW: PITTSBURGH, PA** — *Episode 3 of 3. Repeats Tue 1/12, 2:30pm; Wed 1/13, 2pm*

10:00 **IN THEIR OWN WORDS: QUEEN ELIZABETH II** — A program profiles Britain's Queen Elizabeth II using her own quotes to frame her story. Follow Elizabeth's remarkable life, from her youth through her reign of more than 60 years. **Repeats Tue 1/12, 5pm; Wed 1/13, 4pm; Thur 1/14, 1pm**

11:00 **INDEPENDENT LENS: AUTISM IN LOVE** — An independent film follows four adults on the autism spectrum as they open up their personal lives and navigate dating and romantic relationships, showing that despite many challenges, love can find a way.

12:30AM **CHARLIE ROSE** — **Repeats next weekday, noon**

12 Tuesday

7:00 **PBS NEWSHOUR**

8:00 **FINDING YOUR ROOTS, SEASON 3** — In this WETA co-production, scholar Henry Louis Gates, Jr., delves into guest participants' genealogy. *Part 2 of 10. The Irish Factor.* Gates explores the shared Irish ancestry of Soledad O'Brien, Bill O'Reilly and Bill Maher and how they have been deeply influenced by their Irish roots. **Repeats Wed 1/13, 5pm; Sun 1/17, 4:30pm**

9:00 **PBS NEWSHOUR SPECIAL REPORT: STATE OF THE UNION ADDRESS**

11:00 **CHARLIE ROSE** — **Repeats next weekday, noon**

13 Wednesday

7:00 **PBS NEWSHOUR**

8:00 **NATURE: NATURAL BORN HUSTLERS** — A miniseries spotlights the masters of disguise and illusion, the cheats and sneaks of the animal world. *Episode 1 of 3. Staying Alive.* Animals are observed outwitting predators, finding or catching food, and raising the next generation. Would they lie, cheat or steal from one another to survive? Of course they would. {DVI} **Repeats Thur 1/14, 3pm**

9:00 **NOVA: LIFE'S ROCKY START** — From the first sparks of life to the survival of the fittest, *NOVA* explores the secret relationship between rocks and life. This program goes around the world and back in time to investigate how minerals are vital to the origins and evolution of life. {DVI} **Repeats Thur 1/14, 4pm**

10:00 **EARTH'S NATURAL WONDERS** — A miniseries explores the most extraordinary places on the planet, visiting six continents to learn about these natural wonders and their inhabitants. *Episode 1 of 3. Extreme Wonders.* The series visits extreme locales, including Mount Everest's

Khumbu Icefall; the Grand Canyon, where conservationists try to ensure a condor chick's survival; and the slopes of Mount Kilimanjaro, where farmers battle with elephants. {DVI} **Repeats Thur 1/14, 5pm**

11:00 **CHARLIE ROSE** — **Repeats next weekday, noon**

14 Thursday

7:00 **PBS NEWSHOUR**

8:00 **THE INSPECTOR LYNLEY MYSTERIES, SERIES I: FOR THE SAKE OF ELENA** — A deaf runner's murder while jogging brings Scotland Yard investigators Lynley and Havers to Cambridge to find a killer among the university's academics. Nathaniel Parker and Sharon Small star. **Repeats Fri 1/15, 1pm**

9:30 **DOC MARTIN, SERIES 7** — *Part 1 of 8.* See the Sunday, January 10, 8 p.m. listing. **R**

10:30 **INSIDE ASPREY: LUXURY BY ROYAL APPOINTMENT** — Where do the wealthy shop? In London, the aristocracy buys decadently expensive accoutrements from a store called Asprey. Jim Carter (*Downton Abbey*'s Mr. Carson) narrates this documentary about the business. **Repeats Fri 1/15, 3:30pm**

11:30 **CHARLIE ROSE** — **Repeats next weekday, noon**

15 Friday

7:00 **PBS NEWSHOUR**

8:00 **WASHINGTON WEEK WITH GWEN IFILL** — In WETA's long-running production, moderator and managing editor Gwen Ifill leads a discussion by a panel of top journalists on the news events of the week. **Repeats Sat 1/16, 6:30pm**

8:30 **PIZZA IN WASHINGTON** — A WETA TV 26 production explores the "pizza renaissance" taking place around Greater Washington, spotlighting a dozen eateries in the District, Maryland and Virginia.

9:00 **WILLIE NELSON: THE LIBRARY OF CONGRESS GERSHWIN PRIZE FOR POPULAR SONG** — A performance special, co-produced by WETA and taped at DAR Constitution Hall, honors Willie Nelson, spotlighting the awarding of the Library of Congress Gershwin Prize for Popular Song to the music icon amid tributes from an all-star lineup of guest artists. The evening of music was taped November 18. See page 5 for details. **Repeats Sun 1/17, 2pm; Tue 1/19, 3:30pm**

10:30 **ROYALTY CLOSE UP: THE PHOTOGRAPHY OF KENT GAVIN** — *Parts 1 & 2 of 2.* Utilizing an incredible vault of previously unreleased photographs, filmmaker Don Letts explores the work of photojournalist Kent Gavin, who has spent more than 30 years photographing the royal family. **Repeats Sat 1/16, 12:09am**

12:30AM **CHARLIE ROSE: THE WEEK**

1AM **CHARLIE ROSE** — **Repeats next weekday, noon**

16 Saturday

ON WETA TV 26, 6AM-6PM. See weta.org/tv for listings.

SIMULCAST ON WETA TV 26 & WETA HD, 6PM-12:09AM:

6:00 **PBS NEWSHOUR WEEKEND**

6:30 **WASHINGTON WEEK WITH GWEN IFILL** — **R**

7:00 **DOC MARTIN, SERIES 7** — *Part 1 of 8. R*



MINIATURE OWL/COURTESY ©BBC/NICK GREEN

Wednesdays, January 13, 20 & 27 at 8 p.m. on WETA TV 26/HD

A three-part *Nature* miniseries, *Natural Born Hustlers*, spotlights the cheats, sneaks and masters of disguise in the animal world.



HEATHER WALSH

Wednesday, January 20 at 9 p.m. on WETA TV 26/HD
NOVA: *Mystery Beneath the Ice* visits Antarctica to follow efforts to learn what is killing off a vital part of the ocean food chain.

- 8:00 LUTHER, SERIES 1** — A crime thriller stars Idris Elba and Ruth Wilson. *Part 3 of 6.* Kirsten Ross, a young mother, has been abducted. Luther realizes that this is the work of Lucien Burgess, a collector and writer of the occult, who was suspected of the murder of another woman 10 years previously; but Burgess was never charged. **Repeats Sun 1/17, 11pm; Mon 1/18, 2pm**
- 9:00 THE WETA MOVIE: MOONSTRUCK** — In Norman Jewison's 1987 romantic comedy, an Italian-American widow (Cher, who won Best Actress for the role), engaged to a reticent suitor (Danny Aiello), falls in love with his brother (Nicolas Cage). Olympia Dukakis, who co-stars, won Best Supporting Actress. (1-42) **Repeats Sun 1/17, noon**
- 10:42 DOC MARTIN: THE MOVIE** — [*Before the series Doc Martin was created, Doc Martin: The Movie — starring Martin Clunes — was a made-for-TV movie based on Clunes's character in the 2000 film Saving Grace.*] When successful but unhappy Dr. Martin Bamford discovers that his wife has become involved with three of his friends, his world is ripped apart. Bamford flees London and heads to a small coastal village to work out the big questions in his life. (90 min.)

17 Sunday

- ON WETA TV 26, 6AM-12N.** See weta.org/hd for WETA HD.
6AM-12N See the Sunday, January 10 listings.
SIMULCAST ON WETA TV 26 & WETA HD, 12N-12M:
- 12N THE WETA MOVIE: MOONSTRUCK** — (1-42) **R**
 - 2:00 WILLIE NELSON: THE LIBRARY OF CONGRESS GER-SHWIN PRIZE FOR POPULAR SONG** — **R**
 - 3:30 PIZZA IN WASHINGTON** — **R**
 - 4:00 BURGERS IN WASHINGTON** — A WETA TV 26 production explores 17 notable purveyors of hamburgers in Greater Washington. **Repeats Fri 1/22, 8:30pm**
 - 4:30 FINDING YOUR ROOTS, SEASON 3** — *Part 2 of 10. The Irish Factor.* **R**
 - 5:30 SCI-TECH NOW**
 - 6:00 PBS NEWSHOUR WEEKEND**
 - 6:30 HONORED TO SERVE: ULTIMATE SACRIFICE**
 - 7:00 DOC MARTIN, SERIES 7** — *Part 1 of 8.* **R**
 - 8:00 DOC MARTIN, SERIES 7** — *Part 2 of 8.* Martin begins therapy, and he may have met his match in the well-qualified Dr. Rachel Timoney. Louisa's return from Spain only raises more questions about their relationship. **Repeats Mon 1/18, 5pm; Thur 1/21, 9:30pm; Fri 1/22, 2:30pm; Sat 1/23, 7pm; Sun 1/24, 7pm**
 - 9:00 DOWNTON ABBEY, SEASON 6 ON MASTERPIECE** — *Part 3 of 9.* A wedding dress drama takes a disastrous turn. The breakfast battle is settled. A handsome volunteer helps Edith meet a deadline. The hospital debate gets nasty. {DVI} **Repeats Mon 1/18, 4pm**
 - 10:00 MERCY STREET** — A drama follows a cast of characters — doctors, nurses, contraband laborers and Southern loyalists — who intersect in the chaotic world of Union-occupied Alexandria, Virginia, and the Mansion House Hospital in the early years of the Civil War. *Part 1 of 6. The New Nurse.* New England nurse Mary Phinney begins her duties in Mansion House, a hotel turned Union hospital in occupied Alexandria. Mansion House owner James Green Sr. struggles to preserve the family fortune as daughter Emma secretly searches for her beau. **Repeats Thur 1/21, 10:30pm**
 - 11:00 LUTHER, SERIES 1** — *Part 3 of 6.* See the Saturday, January 16, 8 p.m. listing. **R**

18 Monday

- 7:00 PBS NEWSHOUR**
- 8:00 ANTIQUES ROADSHOW: SPOKANE, WA** — *Episode 3 of 3. Repeats Tue 1/19, 1:30pm; Wed 1/20, 1pm*
- 9:00 ANTIQUES ROADSHOW: EL PASO, TX** — *Episode 1 of 3. Repeats Tue 1/19, 2:30pm; Wed 1/20, 2pm*
- 10:00 IN THEIR OWN WORDS: MUHAMMAD ALI** — A program profiles Muhammad Ali using his own memorable quotes, following his path from a gym in Louisville to boxing successes, conversion to Islam, opposition to the draft, exile from the ring, comeback fights, Parkinson's disease, and his inspirational re-emergence. **Repeats Tue 1/19, 5pm; Thur 1/21, 1pm; Sun 1/24, 3:30pm**
- 11:00 INDEPENDENT LENS: LITTLE WHITE LIE** — Filmmaker Lacey Schwartz grew up with two loving Jewish parents. When she discovers that the man she's assumed was her father is not her biological parent, she unlocks a powerful family secret about her real father.
- 12M CHARLIE ROSE** — **Repeats next weekday, noon**

19 Tuesday

- 7:00 PBS NEWSHOUR**
- 8:00 FINDING YOUR ROOTS, SEASON 3** — Scholar Henry Louis Gates, Jr., delves into guest participants' genealogy. *Part 3 of 10. In Search of Freedom.* Gates examines how the ancestors of Maya Rudolph, Shonda Rhimes and Keenen Ivory Wayans struggled for freedom, and helps each of these cultural trailblazers gain a new understanding of how they fit into this proud trajectory. **Repeats Wed 1/20, 5pm; Sun 1/24, 4:30pm**
- 9:00 BONNIE & CLYDE: AMERICAN EXPERIENCE** — The history series chronicles the true story of the most famous outlaw couple in U.S. history. Though their exploits were romanticized, the Barrow gang was believed responsible for a host of murders, as well as robberies and kidnappings. **Repeats Wed 1/20, 4pm; Thur 1/21, 2pm; Sun 1/24, 2:30pm; Wed 1/27, 4pm**
- 10:00 FRONTLINE: SUPPLEMENTS AND SAFETY** — *Frontline* investigates the hidden dangers of vitamins and supplements, a multibillion-dollar industry with limited FDA oversight.
- 11:00 CHARLIE ROSE** — **Repeats next weekday, noon**

20 Wednesday

- 7:00 PBS NEWSHOUR**
- 8:00 NATURE: NATURAL BORN HUSTLERS** — A miniseries spotlights the masters of disguise and illusion, the cheats and sneaks of the animal world. *Episode 2 of 3. The Hunger Hustle.* Be amazed by animals that have adapted their bodies or behavior in extreme ways to create a tantalizing trap — all in the name of luring in the next meal. {DVI} **Repeats Thur 1/21, 3pm**
- 9:00 NOVA: MYSTERY BENEATH THE ICE** — *NOVA* goes under the ice to explore Antarctica's under-ice landscape with a team of scientists as they search for the mystery killer that's decimating the population of delicate shrimp-like creatures at the foundation of the Antarctic food chain. {DVI} **Repeats Thur 1/21, 4pm**
- 10:00 EARTH'S NATURAL WONDERS** — *Episode 2 of 3. Wonders of Water.* The series spotlights wonders created by the grand power of water, including Victoria Falls, where people risk death to reach fishing pools; and ocean reefs, where a guardian seeks a manta ray to help save the species. {DVI} **Repeats Thur 1/21, 5pm**
- 11:00 CHARLIE ROSE** — **Repeats next weekday, noon**

21 Thursday

- 7:00 PBS NEWSHOUR**
- 8:00 THE INSPECTOR LYNLEY MYSTERIES, SERIES 1: MISSING JOSEPH** — A Lancashire vicar calling on a single-mother parishioner falls victim to her cooking, and Lynley and Havers explore whether or not the death was accidental. Nathaniel Parker and Sharon Small star. **Repeats Fri 1/22, 1pm**
- 9:30 DOC MARTIN, SERIES 7** — *Part 2 of 8.* See the Sunday, January 17, 8 p.m. listing. **R**
- 10:30 MERCY STREET** — *Part 1 of 6. The New Nurse.* See the Sunday, January 17, 10 p.m. listing. **R**
- 11:30 CHARLIE ROSE** — **Repeats next weekday, noon**



COURTESY JOHN CHAFER

Monday, January 25 at 9 p.m. on WETA TV 26/HD
In Defense of Food features celebrated author Michael Pollan exploring the foods that people should eat to be healthy.

22 Friday

- 7:00 PBS NEWSHOUR**
8:00 WASHINGTON WEEK WITH GWEN IFILL — In WETA's long-running production, moderator and managing editor Gwen Ifill leads a discussion by a panel of top journalists on the news events of the week. **Repeats Sat 1/23, 6:30pm**
8:30 BURGERS IN WASHINGTON — R
9:00 GREAT PERFORMANCES AT THE MET: IL TROVATORE — Verdi's classic opera melodrama stars soprano Anna Netrebko in her Metropolitan Opera role debut as Leonora. Dmitri Hvorostovsky sings Count di Luna, with Yonghoon Lee as Manrico, the title character, Štefan Kocán as Ferrando and Dolora Zajick as the gypsy Azucena.
12M CHARLIE ROSE — **Repeats next weekday, noon**

23 Saturday

- ON WETA TV 26, 6AM-6PM.** See weta.org/tv for listings.
SIMULCAST ON WETA TV 26 & WETA HD, 6PM-12:07AM:
6:00 PBS NEWSHOUR WEEKEND
6:30 WASHINGTON WEEK WITH GWEN IFILL — R
7:00 DOC MARTIN, SERIES 7 — *Part 2 of 8.* R
8:00 LUTHER, SERIES I — A crime thriller stars Idris Elba and Ruth Wilson. *Part 4 of 6.* When a serial killer goes on the rampage, Luther must put his personal life aside and delve inside the murderer's mind to discover what is driving him to kill. Meanwhile, serial killer Henry Madsen, the man responsible for Luther's extended leave, has woken up from his coma, making it dangerous for Luther to see Alice. **Repeats Sun 1/24, 11pm; Mon 1/25, 2pm**
9:00 THE WETA MOVIE: PRESUMED INNOCENT — Alan Pakula's 1990 adaptation of the Scott Turow thriller stars Harrison Ford as a married prosecutor who must prove his innocence after being charged with murdering a seductive colleague. Co-starring are Brian Dennehy, Bradley Whitford, Raul Julia, Greta Scacchi and Bonnie Bedelia. (2:07) **Repeats Sun 1/24, noon**
11:07 NOTE BY NOTE (THE MAKING OF STEINWAY L1037) — A film follows the creation of a handcrafted Steinway concert grand piano, #L1037, from forest floor to concert hall, in a process spanning 12 months.

24 Sunday

- ON WETA TV 26, 6AM-12N.** See weta.org/hd for WETA HD.
6AM-12N See the Sunday, January 10 listings.
SIMULCAST ON WETA TV 26 & WETA HD, 12N-12M:
12N THE WETA MOVIE: PRESUMED INNOCENT — (2:07) R
2:30 BONNIE & CLYDE: AMERICAN EXPERIENCE — R
3:30 IN THEIR OWN WORDS: MUHAMMAD ALI — R
4:30 FINDING YOUR ROOTS, SEASON 3 — *Part 3 of 10.* In *Search of Freedom.* R
5:30 SCI-TECH NOW
6:00 PBS NEWSHOUR WEEKEND
6:30 HONORED TO SERVE: ULTIMATE SACRIFICE
7:00 DOC MARTIN, SERIES 7 — *Part 2 of 8.* R

- 8:00 DOC MARTIN, SERIES 7** — *Part 3 of 8.* Martin decides to move out to give Louisa the space she needs. Louisa is intrigued to meet Martin's therapist, but she is less enthusiastic about Dr. Timoney's suggestion of couples therapy. **Repeats Mon 1/25, 5pm; Thur 1/28, 9:30pm; Fri 1/29, 2:30pm; Sat 1/30, 7pm; Sun 1/31, 7pm**
9:00 DOWNTON ABBEY, SEASON 6 ON MASTERPIECE — *Part 4 of 9.* Miss Baxter faces a dilemma. Anna and Mary rush to London. Daisy continues to press her case. A former maid comes to lunch. Car talk is in the air. {DVI} **Repeats Mon 1/25, 4pm**
10:00 MERCY STREET — *Part 2 of 6.* *The Haversack.* Confederate belle Emma nurses her wounded friend. Dr. Foster wrestles with his marriage and career as Mary tries to improve her patients' lives with Samuel's help. Aurelia submits to Silas' advances in exchange for his help. **Repeats Thur 1/28, 10:30pm**
11:00 LUTHER, SERIES I — *Part 4 of 6.* See the Saturday, January 23, 8 p.m. listing. R

25 Monday

- 7:00 PBS NEWSHOUR**
8:00 ANTIQUES ROADSHOW: LITTLE ROCK, AR — *Episode 1 of 3.* **Repeats Tue 1/26, 1:30pm**
9:00 IN DEFENSE OF FOOD — *New York Times* best-selling author Michael Pollan ("Eat food. Not too much. Mostly plants.") undertakes a journey to find out what people should eat to be healthy. Pollan cuts through today's conflicting dietary messages and makes it simple to enjoy food and stay healthy. **Repeats Tue 1/26, 2:30pm; Wed 1/27, 1pm; Sun 1/31, 2pm**
11:00 INDEPENDENT LENS: NO MÁS BEBÉS (NO MORE BABIES) — An independent film explores the case of Mexican-American women who claim they were coercively sterilized at an L.A. hospital in the 1960s/1970s.
12M CHARLIE ROSE — **Repeats next weekday, noon**

26 Tuesday

- 7:00 PBS NEWSHOUR**
8:00 FINDING YOUR ROOTS, SEASON 3 — Scholar Henry Louis Gates, Jr., delves into guest participants' genealogy. *Part 4 of 10.* *Tragedy + Time = Comedy.* Gates uncovers a history of tragedies and triumphs in the families of three of America's funniest men — Jimmy Kimmel, Norman Lear and Bill Hader — as they learn how comedy truly has its place in all aspects of life. **Repeats Wed 1/27, 5pm; Sun 1/31, 4:30pm**
9:00 THE MINE WARS: AMERICAN EXPERIENCE — A documentary goes inside the bitter battle to unionize coal miners at the dawn of the 20th century. The struggle over the power that fueled America led to the largest armed insurrection since the Civil War, and turned parts of West Virginia into a bloody war zone.
11:00 CHARLIE ROSE — **Repeats next weekday, noon**

27 Wednesday

- 7:00 PBS NEWSHOUR**
8:00 NATURE: NATURAL BORN HUSTLERS — A miniseries spotlights the masters of disguise and illusion, the cheats and sneaks of the animal world. *Episode 3 of 3.* *Sex, Lies & Dirty Tricks.* Some males employ artful illusions and blatant cheating to trick the competition and beguile the female. Size, style and skill are all used to best advantage — or faked. **Repeats Thur 1/28, 3pm**
9:00 NOVA: HIMALAYAN MEGAQUAKE — Dramatic eyewitness footage reveals the quake that rocked Nepal in April 2015 from Mt. Everest to the streets of Kathmandu. *NOVA* joins scientists as they examine why this earthquake was so devastating and consider whether another one looms. {DVI} **Repeats Thur 1/28, 4pm**
10:00 EARTH'S NATURAL WONDERS — *Episode 3 of 3.* *Living Wonders.* The series witnesses wonders created by the force of life itself. In the Amazon, boys face fierce animals in a rite of passage; and in Bangladesh, a father and son brave killer bees and man-eating tigers to find honey. {DVI} **Repeats Thur 1/28, 5pm**
11:00 CHARLIE ROSE — **Repeats next weekday, noon**

28 Thursday

- 7:00 PBS NEWSHOUR**

- 8:00 THE INSPECTOR LYNLEY MYSTERIES, SERIES II: PLAYING FOR THE ASHES** — Thomas Lynley (Nathaniel Parker) and Barbara Havers (Sharon Small) of Scotland Yard investigate a string of slayings in the popular 2003 series. *Playing for the Ashes*. A star cricket batsman's death, a scandalous affair and a torched house lead Lynley to break the rules to smoke out the killer. **Repeats Fri 1/29, 1pm**
- 9:30 DOC MARTIN, SERIES 7** — *Part 3 of 8*. See the Sunday, January 24, 8 p.m. listing. **R**
- 10:30 MERCY STREET** — *Part 2 of 6. The Haversack*. See the Sunday, January 24, 10 p.m. listing. **R**
- 11:30 CHARLIE ROSE** — **Repeats next weekday, noon**

29 Friday

- 7:00 PBS NEWSHOUR**
- 8:00 WASHINGTON WEEK WITH GWEN IFILL** — In WETA's long-running production, moderator and managing editor Gwen Ifill leads a discussion by a panel of top journalists on the news events of the week. **Repeats Sat 1/16, 6:30pm**
- 8:30 AN EVENING WITH SHEILA JOHNSON** — WETA's Gwen Ifill interviews the renowned entrepreneur and philanthropist, one of America's most successful businesswomen, in a conversation taped at the Art Institute of Chicago in November before a live audience.
- 9:30 MIKE NICHOLS: AMERICAN MASTERS** — A program profiles one of America's great directors (*The Graduate*, *Angels in America*), who before he passed away in November 2014 discussed his life and 50-year artistic career. The program features interviews with Meryl Streep, Tom Hanks and more.
- 10:30 THE BOOMER LIST: AMERICAN MASTERS** — A documentary spotlights 19 iconic baby boomers — one born each year of the boom, 1946-1964. In intimate interviews by Timothy Greenfield-Sanders, the film's subjects illuminate the movements and changes that shaped the world during the baby boom years.
- 12M CHARLIE ROSE** — **Repeats next weekday, noon**

30 Saturday

ON WETA TV 26, 6AM-6PM. See weta.org/tv for listings.
SIMULCAST ON WETA TV 26 & WETA HD, 6PM-12:30AM:

- 6:00 PBS NEWSHOUR WEEKEND**
- 6:30 WASHINGTON WEEK WITH GWEN IFILL** — **R**
- 7:00 DOC MARTIN, SERIES 7** — *Part 3 of 8. R*
- 8:00 LUTHER, SERIES I** — A crime thriller stars Idris Elba and Ruth Wilson. *Part 5 of 6*. When an art dealer's wife is taken hostage at gunpoint, Luther leads a tense investigation. The hostage takers want payment in



Tuesday, January 26 at 9 p.m. on WETA TV 26/HD
The Mine Wars: American Experience documents the bitter battle to unionize coal mines in the early 20th century, which led to armed insurrection and bloody conflict in parts of West Virginia.



Friday, January 29 at 8:30 p.m. on WETA TV 26/HD

An Evening with Sheila Johnson features Gwen Ifill interviewing the renowned Virginia philanthropist and entrepreneur, who is an owner/partner in the Washington Mystics, Capitals and Wizards.

- diamonds so, stalling for time, Luther substitutes a bag of replacement diamonds from the Serious Crime Unit's evidence safe. Luther and DCI Reed are on hand to arrest the gang members picking up the gems, but everything starts to unravel. **Repeats Sun 1/31, 11pm, Mon 2/1, 2pm**
- 9:00 THE WETA MOVIE: THE POSTMAN ALWAYS RINGS TWICE** — In Tay Garnett's 1946 mystery, a drifter stops at a Greek diner, helps the owner's lusty wife become a widow, and learns that there is no such thing as the perfect crime. Lana Turner, John Garfield and Cecil Kellaway star. [1:53] **Repeats Sun 1/31, noon**
- 11:00 POV: RACING DREAMS** — A film follows three teens who dream of becoming NASCAR drivers. [90 min.]

31 Sunday

ON WETA TV 26, 6AM-12N. See weta.org/hd for WETA HD.
6AM-12N See the Sunday, January 10 listings.

SIMULCAST ON WETA TV 26 & WETA HD, 12N-12M:

- 12N THE WETA MOVIE: THE POSTMAN ALWAYS RINGS TWICE** — [1:53] **R**
- 2:00 IN DEFENSE OF FOOD** — **R**
- 4:00 HONORED TO SERVE: REMEMBERING VIETNAM**
- 4:30 FINDING YOUR ROOTS, SEASON 3** — *Part 4 of 10. Tragedy + Time = Comedy. R*
- 5:30 SCI-TECH NOW**
- 6:00 PBS NEWSHOUR WEEKEND**
- 6:30 HONORED TO SERVE: LOCAL HEROES 1**
- 7:00 DOC MARTIN, SERIES 7** — *Part 3 of 8. R*
- 8:00 DOC MARTIN, SERIES 7** — *Part 4 of 8*. Louisa and Martin have their first therapy session together, though neither of them was expecting to be given homework. Over at the Surgery, Morwenna clashes with a new employee. **Repeats Mon 2/1, 5pm; Thur 2/4, 9:30pm; Fri 2/5, 2:30pm; Sun 2/7, 7pm**
- 9:00 DOWNTON ABBEY, SEASON 6 ON MASTERPIECE** — *Part 5 of 9*. Thomas makes Andy a generous offer. Spratt rescues Denker. A powerful politician comes to dinner. Robert upsets the family. Mary gets suspicious. **Repeats Mon 2/1, 4pm**
- 10:00 MERCY STREET** — *Part 3 of 6. The Uniform*. Dr. Foster confronts his family's divided loyalties when his mother and wounded Confederate brother arrive. Alice is shocked to find her fiancé, Tom, deeply changed by war. Samuel and Aurelia try to persuade a slave boy to seize a chance at freedom. **Repeats Thur 2/4, 10:30pm**
- 11:00 LUTHER, SERIES I** — *Part 5 of 6*. See the Saturday, January 30, 8 p.m. listing. **R**

COURTESY THE HISTORYMAKERS

WETA Television

WETA Magazine is published monthly by the Greater Washington Educational Telecommunications Association for its members. Three dollars of each member's dues are designated for its subscription. WETA occasionally exchanges member names with other organizations. If you wish that your name not be exchanged, please call Audience Services at 703-998-2724. ©2016 by Greater Washington Educational Telecommunications Association. All rights reserved. No part of this magazine may be reproduced in any form without written permission. Periodical postage paid at Arlington, VA 22210 and additional offices. Send address changes to WETA, 3939 Campbell Avenue, Arlington, Virginia 22206. Volume 29, Number 1. ISSN No. 1041-2700.

PRINTED ON RECYCLED PAPER



Publisher Mary Stewart
 Editor Jeff Giese
 Art Director Tommy Dingus
 Design Manifest LLC

Editorial and Advertising Offices
 3939 Campbell Avenue
 Arlington, VA 22206



26.2 Over the Air Via Antenna
Cox 800
Comcast 265
FiOS 474
RCN 39

British Television at Its Best

The WETA UK channel is devoted to presenting the best in British television programming, broadcasting beloved classics and contemporary series around the clock, seven days a week. WETA UK offers a full schedule of great entertainment programming — featuring drama, mystery, comedy and documentary series — all delivered with an accent from the Isles. Visit wetauk.org for a complete schedule and program descriptions.

P.M. PROGRAMMING ON WETA UK IN JANUARY

	SUNDAY	MONDAY	TUESDAY	WEDNESDAY	THURSDAY	FRIDAY	SATURDAY
12pm	• Red Cap, Series II (1/3 & 1/10) • Our Zoo (starts 1/17)	Are You Being Served?	Are You Being Served?	Are You Being Served?	Are You Being Served?	Are You Being Served?	(from 11:30) Globe Trekker
12:30pm		As Time Goes By	As Time Goes By	As Time Goes By	As Time Goes By	As Time Goes By	Masterpiece: Downton Abbey IV
1pm	Vera, Series II (Series III starts 1/31)	New Tricks	New Tricks	New Tricks	New Tricks	New Tricks	Agatha Christie's Poirot I (ex. 1/30)
1:30pm							
2pm			MI-5	MI-5	MI-5	MI-5	Sherlock Holmes I
2:30pm	Prime Suspect, Series I	Waking the Dead	Waking the Dead	Waking the Dead	Waking the Dead	Miss Fisher's Murder Mysteries I	
3pm							
3:30pm	BBC Antiques Roadshow						
4pm	Foyle's War, Series IV	Globe Trekker	Midsomer Murders VIII/IX	Doc Martin Series VII starts 1/13	BBC Antiques Roadshow	Father Brown III	Pie in the Sky II
4:30pm					Lewis, Series I/II		
5pm	Agatha Christie's Poirot, Series I	• Moone Boy III (1/4-1/18) • Rev I (1/25)	BBC Antiques Roadshow	The Doctor Blake Mysteries II		• Rosemary & Thyme I • Death in Paradise I (starts 1/22)	Are You Being Served?
5:30pm							
6pm	Masterpiece: Downton Abbey IV (90 min. on 1/31)	• BBC Antiques Roadshow (1/4) • Downton Abbey, Season VI on Masterpiece (starts 1/11 at 5:47pm)	Pie in the Sky II	Afterlife, Series I	Inspector Morse IV	Sherlock Holmes I	As Time Goes By
6:30pm							As Time Goes By
7pm	• Diana vs The Queen (1/3) • BBC Antiques Roadshow (7:30pm on 1/31)	Are You Being Served?	Are You Being Served?	Are You Being Served?	Are You Being Served?	Are You Being Served?	Doc Martin Series VII starts 1/16
7:30pm		As Time Goes By	As Time Goes By	As Time Goes By	As Time Goes By	As Time Goes By	
8pm	• Manners of Downton Abbey (1/3) • Downton Abbey, Season VI on Masterpiece (starts 1/10)	Pie in the Sky, Series II	The Doctor Blake Mysteries II	Inspector Morse, Series IV	Father Brown, Series III	Miss Fisher's Murder Mysteries, Series I	• Red Cap, Series II • Our Zoo (starts 1/16)
8:30pm							
9pm	• Moone Boy, Series III (1/3-1/17) • Rev, Series I (starts 1/24)	Midsomer Murders, Series VIII/IX	Doc Martin Series VII starts 1/12	Lewis, Series I/II	• Rosemary & Thyme, Series I • Death in Paradise, Series I (starts 1/21)	Foyle's War, Series IV	Vera, Series II (series III starts 1/30)
9:30pm							
10pm	Luther, Series I	Father Brown, Series III	Afterlife, Series I (10:30pm on 1/5; then 10pm)	• The Doctor Blake Mysteries II (1/6) • Inspector Lynley Mysteries I (starts 1/13)	Miss Fisher's Murder Mysteries, Series I	Masterpiece: Downton Abbey, Series IV (90 min. on 1/29)	Prime Suspect, Series I
10:30pm							
11pm	• Globe Trekker • (Doctor Who at 12m)	• BBC Roadshow • Our Zoo (starts 1/18)	Rosemary & Thyme, Series I (11:30pm on 1/5)		Pie in the Sky, Series II	• To Play the King (1/1-1/15) • BBC Antiques Roadshow	Dalziel & Pascoe VI (to 12:30am)
11:30pm							
	SUNDAY	MONDAY	TUESDAY	WEDNESDAY	THURSDAY	FRIDAY	SATURDAY

VISIT WETAUK.ORG FOR A PRINTABLE FULL-DAY SCHEDULE.

WETA UK Highlights



BIG TALK PRODUCTIONS 2014

Our Zoo

Saturdays at 8 p.m. on WETA UK, starting January 16

A funny and tender 2014 BBC drama stars Lee Ingleby (*Inspector George Gently*, *Master and Commander: The Far Side of the World*) as George Mottershead, an ex-serviceman struggling to come to terms with the effects of the Great War, who finds a monkey locked up in a quarantine cage and comes up with an idea that becomes a life-long mission: building Britain's first cage-free zoo. The charming six-part series *Our Zoo*, from the director of *The Bletchley Circle*, is based on the true story of the Mottershead family which, despite staunch opposition and great personal sacrifice, founded Chester Zoo in the 1930s. With the support of his father, George settles on a large country estate for his project and buys unwanted animals. The series follows the ups and downs faced by the Mottershead family as they try to get George's idea off the ground. Liz White (*Life on Mars*), Anne Reid (*Last Tango in Halifax*) and Peter Wright (*The Paradise*) co-star.



CLERKENWELL FILMS/ITV 2005

Afterlife

Tuesday nights on WETA UK, starting January 5

A chilling psychological drama, set in Bristol, enters the world of the dead to answer the questions of the living. The 2005 ITV series *Afterlife* stars Andrew Lincoln (*The Walking Dead*, *Love Actually*) as Robert Bridge, a psychology lecturer grieving the loss of a young son who was killed in a car accident 3 years before. Invited to an "evening of clairvoyance," he meets reluctant, cautious psychic Alison Mundy — portrayed by Lesley Sharp (*Vera Drake*) — who is quite different from the fraudulent psychics that sceptic Robert is used to. She appears to be able to communicate with spirits and, tormented, is driven by compulsion to seek to resolve relationships torn apart by death. When Alison's readings provoke an adverse reaction in one of Robert's own pupils, he begins to study her with the intention of writing about her work and the people she helps, but their association is thrown into crisis when Alison reveals she is in touch with Robert's dead son.

WETA Television

Death in Paradise, Series I

Thursdays at 9 p.m. on WETA UK, starting January 21

WETA UK reprises *Death in Paradise*, a light-hearted 2011 crime drama and fish-out-of-water story set on a fictional Caribbean island (and filmed on the islands of Guadalupe) with a French- and English-speaking population. Ben Miller (*Malice Aforethought*; *The Worst Week of My Life*, *Primeval*) stars as Richard Poole, a straight-laced London police detective who, at the series' outset, arrives to investigate a mysterious murder and ends up cracking the case. His "reward" is a permanent posting as head of the island's misfit team of detectives — despite his pronounced distaste for sun and sand. The quintessentially British cop finds a ramshackle station and a very different type of policing, and he tries to bring his own standard of rigor to the relaxed island workplace. Poole's team includes Detective Sergeant Camille Bordey, portrayed by Sara Martins, a former petty criminal turned investigator.



© RED PLANET PICTURES 2011

Luther



© BBC 2010

Luther and More

Also on WETA UK in January: *Luther* (see page 1) airs Sundays at 10 p.m.; *Doc Martin*, *Series VII* (see page 1) airs Tuesdays at 9 p.m. starting January 12; *Downton Abbey*, *Season VI on Masterpiece* airs Sundays at 8 p.m. starting January 10 (a week after its premiere on WETA TV 26/HD); *The Inspector Lynley Mysteries*, *Series I* (see page 2) airs Wednesdays at 10:30 p.m. starting January 13; and *Vera* continues on Saturdays at 9 p.m.

26.3 Over the Air Via Antenna
Cox 801
Comcast 266
Fios 472
RCN 38

WETA
KIDS

Providing a Safe Haven for Children

WETA Kids offers safe programming for our young viewers, presenting educational television broadcasts 24 hours each day, seven days a week. Below you can find weekday daytime listings for WETA Kids. Note that children's programming also airs six days a week on WETA TV 26. Please visit weta.org/kids to find complete schedules of children's programs on the WETA Kids channel and WETA TV 26.

MONDAY THROUGH FRIDAY ON THE WETA KIDS CHANNEL

Peep/Pocoyo, 5:30am
Mister Rogers' Neighborhood, 6am
Arthur, 6:30am
Odd Squad, 7am
Wild Kratts, 7:30am, 8am
Curious George, 8:30am through 1/15, 9am
Nature Cat, 8:30am as of 1/18
Daniel Tiger's Neighborhood, 9:30am, 10am
Sesame Street, 10:30am
Peg + Cat, 11am
Dinosaur Train, 11:30am, noon
WordWorld, 12:30pm
Cyberchase, 1pm
The Cat in the Hat Knows a Lot About That!, 1:30pm
Super WHY!, 2pm
Cyberchase, 2:30pm
Thomas & Friends, 3pm
Bob the Builder, 3:30pm, 12m
WordWorld, 4pm, Mon-Thur
Roey's Paintbox, 4pm, Fridays
Martha Speaks, 4:30pm
WordGirl, 5pm
Daniel Tiger's Neighborhood, 5:30pm
Curious George, 6pm through 1/15
Nature Cat, 6pm as of 1/18
The Cat in the Hat Knows a Lot About That!, 6:30pm
Arthur, 7pm
Wild Kratts, 7:30pm
Zula Patrol, 8pm
Odd Squad, 8:30pm
Biz Kids, 9pm
Cyberchase, 9:30pm
SciGirls, 10pm
Maya & Miguel, 10:30pm
Bob the Builder, 11pm
Thomas & Friends, 11:30pm
Dinosaur Train, 12m



Odd Squad, a live-action series that helps children ages 5-8 learn math, airs weekdays at 7 a.m. and 8:30 p.m. on the WETA Kids channel, and at 6:30 a.m. on WETA TV 26.



Nature Cat

**airs each weekday at 8:30 a.m./6 p.m.
on the WETA Kids channel and at 8 a.m.
on WETA TV 26, as of January 18**

A new animated PBS series, *Nature Cat*, is designed to encourage kids ages 3-8 to explore and develop connections with the natural world. The series follows Fred, a house cat who dreams of exploring the great outdoors. In each episode, once his family leaves for the day, Fred transforms into Nature Cat, backyard explorer extraordinaire. With the help of his animal friends, Nature Cat embarks on action-packed adventures full of nature investigation and "aha" discovery moments and humor, inspiring children to go outside and "play the show." *Nature Cat* was created by the brothers David Rudman ("Cookie Monster"/"Baby Bear" on *Sesame Street* and "Scooter"/"Janice" on *The Muppets*) and Adam Rudman (*Tom & Jerry*, *Sesame Street*, *Cyberchase*). Actor Taran Killam (*Saturday Night Live*) is the voice of Nature Cat. The program has aired intermittently before settling into daily weekday slots on the WETA Kids channel and WETA TV 26 as of January 18, when the series presents an hour-long special.

Major funding for *Nature Cat* is provided by the Corporation for Public Broadcasting and the Van Eekeren Family, founders of Land O'Frost.

WEEKDAYS ON WETA TV 26

Super WHY!, 5am
Cyberchase, 5:30am
Arthur, 6am
Odd Squad, 6:30am
Wild Kratts, 7am, 7:30am
Nature Cat, 8am as of 1/18
Curious George, 8am (through 1/15), 8:30am
Daniel Tiger's Neighborhood, 9am, 9:30am
Sesame Street, 10am
Peg + Cat, 10:30am
Dinosaur Train, 11am, 11:30am

SUNDAYS ON WETA TV 26

Daniel Tiger's Neighborhood, 6am-8am
Peg + Cat, 8am, 8:30am

Visit weta.org/kids for full listings of children's programs on WETA Kids and WETA TV 26.

Classical WETA 90.9 FM

Classical for Washington

Local Artists Shine on *Front Row Washington*

Mondays at 9 p.m.

By Deborah Lamberton, Senior Producer

The Classical WETA 90.9 FM Monday-night broadcast *Front Row Washington* ushers in the New Year with a fabulous line-up of performances — three of which feature superb local artists — from solo piano and string quartet to wind ensemble and full-blown chamber orchestra. On Monday, January 4 at 9 p.m., the New Orchestra of Washington (NOW), conducted by Alejandro Hernandez-Valdez, takes center stage with a program exploring the element of dance in works by Piazzolla, Rodrigo and Beethoven. NOW performs the crowd-pleasing *Concierto de Aranjuez* by Joaquín Rodrigo, and Beethoven's 7th symphony is given a lean, lively performance with only two musicians per part, offering a refreshing take on this famous work.

On Monday, January 11, the broadcast features Greater Washington's own National Chamber Players from one of their free concerts at Episcopal High School, giving a robust performance of Antonín Dvořák's popular *Serenade for Winds in D minor*. Then on Monday, January 18, we head out to Chamber Music at the Barns at Wolf Trap for a concert by the visiting Jerusalem String Quartet, which presents works by Beethoven, Debussy and Shostakovich.

We close out the month's broadcasts on Monday, January 25 with a rollicking solo recital by Washington-area pianist and Washington Conservatory of Music faculty member Michael Adcock called *Orchestra in a Piano: The Art of Transcription*. Recorded last summer at Washington Conservatory, the program includes lovely transcriptions of J.S. Bach by Ferruccio Busoni, devilishly difficult takes on Schumann and Wagner by Franz Liszt, and four of pianist Earl Wild's inspired settings of George Gershwin songs from his *Seven Virtuoso Etudes*.



COURTESY NEW ORCHESTRA OF WASHINGTON



NING FAN

Bach, Beethoven & More on *Choral Showcase*

Sundays at 9 p.m.

By David Ginder, Morning On-Air Host

Sunday-night broadcast *Choral Showcase* on Classical WETA 90.9 FM celebrates the start of another year with new recordings of Masses, and we begin on January 3 with one of the greatest in all of Western music. Bach's *B minor Mass* is conducted by John Eliot Gardiner with the Monteverdi Choir and English Baroque Soloists. Gardiner reminds us in his *Music in the Castle of Heaven* that, although the bold opening setting of the word "Kyrie" implies an uninterrupted conception of the *Mass*, the piece is precisely the opposite; from first seeds through revisions and expansion, 40 years would pass — over half the composer's life. As Bach polished the piece in his final years, it's as if he already knew then what we know now — that the *B minor Mass* is indeed his legacy.

Marin Alsop's acclaimed recordings of Leonard Bernstein's music now include the *Missa Brevis*, which, from initial form to final piece, spanned almost as much time as the Bach. Originally incidental music for Jean Anouilh's *Lark*, Bernstein reworked the material and added to it on

the occasion of Robert Shaw's retirement from the Atlanta Symphony in 1988. We air the piece on the January 10 broadcast. It calls for countertenor — long before today's composers who are writing more for the voice — plus mixed choir and percussion.

A new recording from San Francisco conducted by Michael Tilson Thomas of Beethoven's *Mass in C* airs on the January 17 broadcast. The piece follows in the tradition of Haydn in that it was written for the Esterházy family, but the music itself does not. The commissioners didn't like it, asking the composer, "My dear Beethoven, now what have you done?" Beethoven did like it, and persuaded publishers to accept it by dictating that, if they wanted the 5th and 6th symphonies (which they did), they had to publish *Mass* too.

Simon Mayr, a contemporary of Beethoven, was very prolific, writing more than 50 each of operas, symphonies and cantatas. Mayr's *Requiem Mass in G minor* is on the January 24 broadcast, from the world premiere recording.

Classical WETA 90.9 FM

Classical for Washington

Shakespeare, Sibelius and Brahms on January's NSO Showcase

Wednesday, January 6 at 9 p.m.

By Nicole Lacroix, Evening On-Air Host



Leonidas Kavakos

©MARCO BORGREVE

"For never was a story of more woe/Than Prokofiev's music to Romeo." That's how ballerina Galina Ulanova paraphrased Shakespeare after the long-delayed premiere of Prokofiev's *Romeo and Juliet*. The ballet was his first big production upon returning to his homeland in 1935 after living abroad for more than 15 years. Normal artistic obstacles were exacerbated by Stalin's political reign of terror, which had begun to extend its influence over the arts. All difficulties aside, though, the ballet is a masterpiece, eloquently retelling Shakespeare's story with the sole means of music and choreography. In January's NSO Showcase on Classical WETA 90.9 FM, Estonian conductor Neeme Järvi leads the National Symphony Orchestra in excerpts from Prokofiev's ballet, taking us from the ball scene in Act I through some of the great love and fight scenes to the end of the tragedy. The performance was recorded at the John F. Kennedy Center for the Performing Arts in November 2013.

Violinist Leonidas Kavakos won the Sibelius competition in 1985 and thus is ideally suited to perform the virtuoso role in Jean Sibelius' *Violin Concerto*, the second masterwork on January's NSO Showcase program. The *Violin Concerto* could be described as Sibelius' emotionally charged farewell to his dream of becoming a virtuoso violinist. As NSO annotator Thomas May writes, "The super-virtuoso called for in the *Concerto* is perhaps a kind of idealized alter ego for the composer." Christoph Eschenbach conducts this performance of the *Violin Concerto* from May 2014.

Eschenbach also leads the orchestra in the final work of January's NSO Showcase program, Brahms' 4th Symphony, recorded at the Kennedy Center Concert Hall in November 2014. NSO Associate Principal Horn Laurel Ohlson says that horn players, and indeed the whole orchestra, revel in the warm, rich, noble sound of this gorgeous music, which represents the summation of Brahms' symphonic career.

Join us Wednesday evening, January 6 at 9 p.m. on Classical WETA as we kick off another great year of music from our National Symphony Orchestra on NSO Showcase.

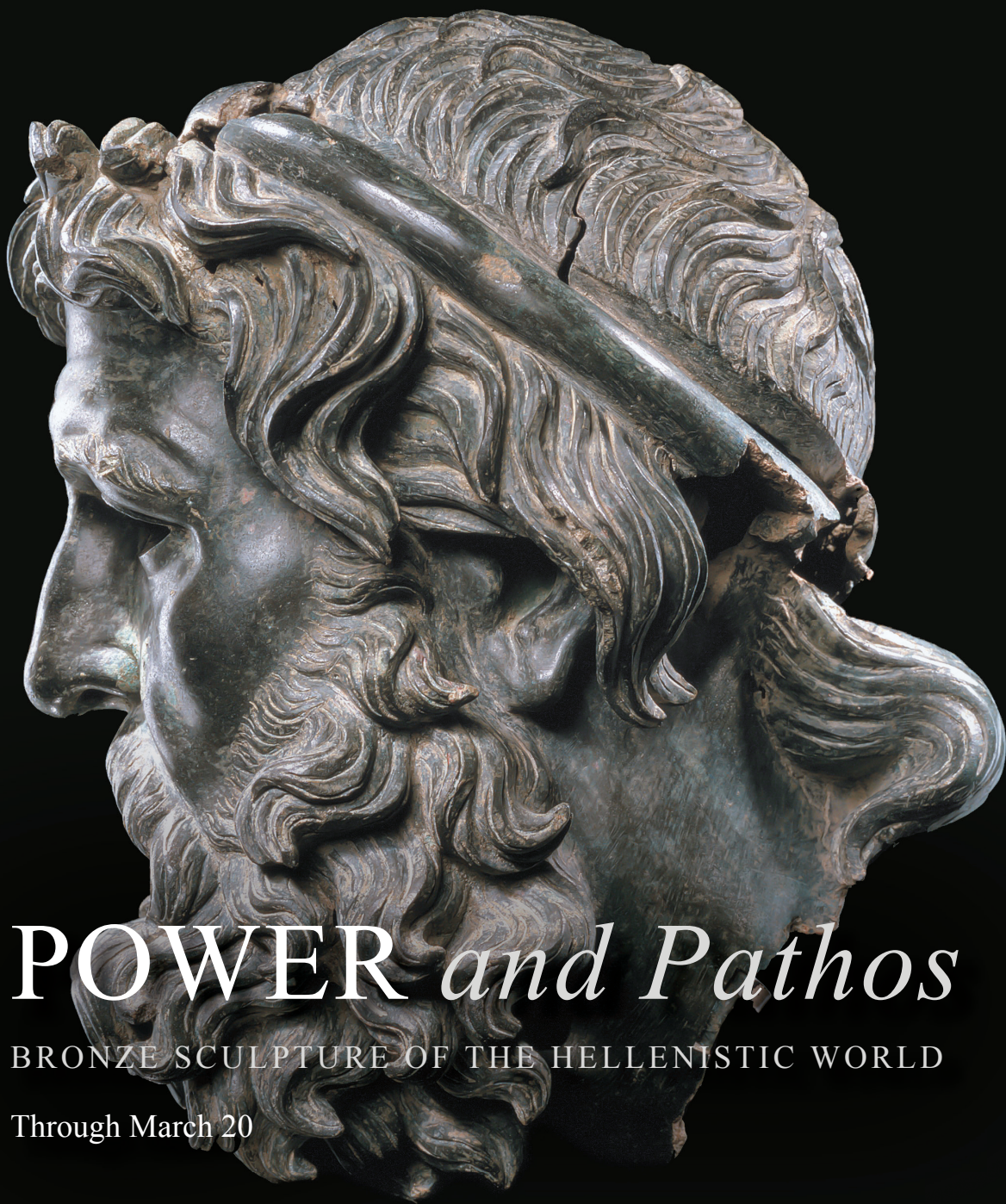
Metropolitan Opera Performances on Classical WETA Opera House Saturdays on Classical WETA 90.9 FM

- Jan. 2 J. Strauss's *Die Fledermaus* (1 p.m.)
James Levine conducts
- Jan. 9 Donizetti's *Anna Bolena* (1 p.m.)
Featuring Sonda Radvanovsky
- Jan. 16 Bizet's *Les Pêcheurs de Perles* (1 p.m.)
- Jan. 23 Wagner's *Tannhäuser* (1 p.m.)
James Levine conducts; featuring Johan Botha,
Eva-Maria Westbroek, Peter Mattei and
Michelle DeYoung
- Jan. 30 Puccini's *Turandot* (1 p.m.)

Classical WETA 90.9 FM

Presenting Classical Music All Day, Every Day
With David Ginder, mornings • Marilyn Cooley, middays •
Bill Bukowski, afternoons • Nicole Lacroix, evenings •
And hosting on the weekend:
Linda Carducci, Chip Brienza, James Jacobs, John Banther

Special Programming:
Monday–Friday at 7 p.m.: PBS NewsHour
Mondays at 9 p.m.: Front Row Washington
Saturdays at 1 p.m.: Classical WETA Opera House
Sundays at 6 p.m.: From the Top
Sundays at 9 p.m.: Choral Showcase
First Wednesday of the month at 9 p.m.:
NSO Showcase (November–July)



POWER *and Pathos*

BRONZE SCULPTURE OF THE HELLENISTIC WORLD

Through March 20

The exhibition was organized by the National Gallery of Art, Washington; the J. Paul Getty Museum, Los Angeles; and the Fondazione Palazzo Strozzi, Florence.

Bank of America is the national sponsor of this touring exhibition.

The exhibition is also made possible through a generous gift from an anonymous donor. The Marshall B. Coyne Foundation has provided additional support through the Fund for the International Exchange of Art. This exhibition is supported by an indemnity from the Federal Council on the Arts and the Humanities.

Head of a Bearded God, first century BC, bronze, The Museum of Fine Arts, Houston, museum purchase funded by Isabel B. and Wallace S. Wilson

National Gallery of Art

Admission is always free

West Building, on the National Mall at Sixth and Constitution Ave NW

Monday–Saturday: 10–5, Sunday: 11–6 | Phone: 202.737.4215 | www.nga.gov



**Go Paperless and Receive
WETA Magazine Online!**

Your monthly *WETA Magazine* can be one click away! Choose to go paperless and we will send you an email each month with a direct link to the magazine on WETA's website. Same pages, same great program information as the print guide. Want to try it out? View the magazine and sign up to go paperless today at weta.org/magazine.

ADVERTISEMENT

**WASHINGTON
NATIONAL OPERA**

Francesca Zambello, Artistic Director

KURT WEILL / MAXWELL ANDERSON

**LOST IN
THE STARS**

**WHEN FAITH IS SHAKEN,
THE TRUTH SHALL SET US FREE.**

Feb. 12–20, 2016
Eisenhower Theater

In English with Projected English Titles



2015–2016 SEASON

ERIC OWENS, PHOTO BY WILLIAM M. BROWN

Major support for WNO is provided by Jacqueline Badger Mars.

David and Alice Rubenstein are the Presenting Underwriters of WNO.

WNO acknowledges the longstanding generosity of Life Chairman Mrs. Eugene B. Casey.

General Dynamics is the Presenting Sponsor of WNO's 2015–2016 Season.

GENERAL DYNAMICS

WNO's season is presented with the support of Daniel and Gayle D'Aniello.

Support for *Lost in the Stars* is provided by Anne Kline Pohanka and Geoffrey Pohanka.

This production is also funded in part by The Kurt Weill Foundation for Music, Inc. New York, NY.



Christoph Eschenbach, Music Director

2015–2016 Season

**Baiba Skride plays
Prokofiev**

Jan. 14–16, 2016

Neeme Järvi, conductor
Baiba Skride, violin

**Daniel Müller-Schott
plays Dvořák**

Jan. 21–23, 2016

Christoph Eschenbach, conductor
Daniel Müller-Schott, cello

**Christoph Eschenbach
conducts Beethoven,
Brahms, & Schubert**

Jan. 28–30, 2016

Christoph Eschenbach, conductor

Ray Chen plays Bruch

Mar. 3–5, 2016

Christoph Eschenbach, conductor
Ray Chen, violin
Adriana Horne, principal harp

**Jean-Yves Thibaudet
plays Liszt**

Mar. 10–12, 2016

Christoph Eschenbach, conductor
Jean-Yves Thibaudet, piano

CONCERT HALL

David and Alice Rubenstein are the Presenting Underwriters of the NSO.

The NSO Music Director Chair is generously endowed by Victoria and Roger Sant.

The Blue Series is sponsored by
United Technologies Corporation.



The NSO's European Tour concerts in Spain are sponsored by



Neeme Järvi



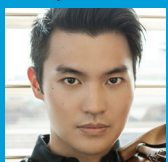
Baiba Skride



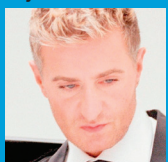
Daniel Müller-Schott



Christoph Eschenbach



Ray Chen



Jean-Yves Thibaudet

